



Program Specification

Program Name: Bachelor of Physical Therapy
Qualification Level : 4
Department: Physical therapy & Health Rehabilitation
College: Applied Medical Sciences
Institution: Majmaah University

Content

A. Program Identification and General Information	3
B. Mission, Goals, and Learning Outcomes	6
C. Curriculum	9
D. Student Admission and Support:	16
E. Teaching and Administrative Staff.....	17
F. Learning Resources, Facilities, and Equipment	19
G. Program Management and Regulations	20
I. Specification Approval Data.....	32
List of Attachments:	32

A. Program Identification and General Information

1. Program Main Location:

Majmaah University's Main Campus, Al Majmaah, Kingdom of Saudi Arabia

2. Branches Offering the Program:

Bachelor of Physical therapy is offered for Male and Female Sections Separately at Majmaah University's main campus.

3. Reasons for Establishing the Program:

(Economic, social, cultural, and technological reasons, and national needs and development, etc.)

Department of Physical therapy & Health Rehabilitation was established in the year 2009 to cover the need for Physical therapy specialists who are in great demand in all health institutions and rehabilitation centres. The establishment of this program came at a critical time while health care systems have been witnessing an increase in the Musculo skeletal injuries and Medical ailments due to increase in sedentary lifestyle. The area of Rehabilitation and Physical fitness have a great need of highly qualified personnel.

i. To provide outstanding educational experiences to our students in order to develop expertise in movement, function and health.

ii. Provide services in the community that promote the health and quality of life in the community like hospitals, rehabilitation centers, pediatric centers, hospices, nursing homes, schools, private practice settings, sport facilities and industry. With clinical experience, advanced academic and continuing education and specialty certification, physical therapists progress to specialist status, administrators, educators and researchers.

The relevance of the program to the mission and goals of the institution.

The program prepares graduates to be knowledgeable, service-oriented, collaborative, reflective practitioners. They render evidence based, independent judgments concerning patient/client needs by virtue of critical thinking, commitment to lifelong learning, and ethical values. They possess the intellect, psychomotor proficiency and core values to meet the current and future needs of the profession and the health care system. The acquired qualification enables graduates of the Program to professionally practice as Physical Therapist in public and private hospitals and rehabilitation setup or to start their own practice

after completing the licensing procedures with the professional bodies in the kingdom. Graduates of the Bachelor's Study Program of Physical Therapy can continue in postgraduate studies or Doctor of Physical Therapy Program at other universities in the Kingdom or seek for academic career in foreign universities.

4. Total Credit Hours for Completing the Program:

The Physical Therapy Program is offered as a full-time on-campus day-time program, requiring for graduation, the successful completion of one hundred thirty seven (137) credit hours which are delivered in the form of lectures, tutorials, laboratories, clinical practice, self-study and ending with a non-credit but mandatory one year rotatory internship at any of the hospital/hospitals in the Kingdom.

5. Learning Hours:

The length of time that a learner takes to complete learning activities that lead to achievement of program learning outcomes, such as study time, homework assignments, projects, preparing presentations, library times)

According to the credit system used to measure the length of studies at Majmaah University;

- One (1) theory credit Hours = 1 Hour
- One (1) lab/practical credit Hours = 2 Hours
- One (1) clinical credit Hours = 2 Hours
- workload in hours for the entire study program,

The total workload for the entire programs was calculated as 8425 Hours, which included the contact hours, Internship Training and self-study hours. The internship workload was calculated based on 52 weeks of training from 08:00 to 05:00 pm 5 days a week. The details are provided below.

Total fifty three (53) modules along with one year non-credit but mandatory, rotatory internship is required for complete the Physical Therapy Program. Out of total fifty three (53) modules forty three (43) modules are mandatory, remaining ten (10) modules are offered as elective under University, College and Program Requirements.

A mandatory one-year internship consisting of a comprehensive clinical training with rotation to Intensive Care Unit (ICU), Critical Care Unit (CCU), Orthopaedic, Neurology, Cardiopulmonary, Paediatric, Burns and surgery Department is mandatory. The student shall have completed all academic requirements to qualify for internship program. The students

are awarded the Bachelor degree of Applied Medical Sciences in Physical Therapy after successful completion of all clinical rotations, competencies and objectives.

6. Professional Occupations/Jobs:

Our graduates have ample job prospects in Hospitals, Nursing homes, Residential homes, Rehabilitation centers, Private clinics and in Academic institutions across Saudi Arabia. Additionally, our graduates with qualification in physical therapy can work at Outpatient clinics, Community health care centers or Primary health care centers, Fitness centers or Health clubs, Occupational health centers, Special schools and Senior citizen centers etc. According to the growing developments in Saudi Arabia, it is expected that more hospitals will be established in the Kingdom, as there is need for about 30000 to 35000 beds for patient care. The growing demand in health sector paves way for job opportunities to health professionals.

7. Major Tracks/Pathways (if any): NOT APPLICABLE

Major track/pathway	Credit hours (For each track)	Professional Occupations/Jobs (For each track)
1.		
2.		
3.		
4.		

8. Intermediate Exit Points/Awarded Degree (if any):

Intermediate exit points/awarded degree	Credit hours
1.	
2.	
3.	

B. Mission, Goals, and Learning Outcomes

1. Program Mission:

Nurture an enriched academic environment to prepare skilled physical therapists, professionally committed to practice in ethical manner, for the advancement of health care services, research and community partnership.

2. Program Goals:

Following are the goals of Physical Therapy Program.

- Goal 1.** Develop creative and flexible educational approaches to provide outstanding educational experiences to our students to develop expertise in the profession of physical therapy and health rehabilitation.
- Goal 2.** Prepare physical therapy professionals sensitive to the evolving concept of comprehensive rehabilitation and prepared to cooperate with other health professionals in meeting the changing health needs of society.
- Goal 3.** Cultivate knowledge, understanding and appreciation of the social, political, and economic aspects of health to practice in an ethical and legal manner.
- Goal 4.** Contribute to the advancement of knowledge in physical therapy and rehabilitation through scholarly inquiry and research for assuming responsibilities in the areas of patient care, administration, and education.
- Goal 5.** Model leadership, professionalism, and lifelong learning through involvement in the professional development forums and community interdisciplinary collaboration.

3. Relationship between Program Mission and Goals and the Mission and Goals of the Institution/College.

The relationship between the Physical therapy program mission and goals with the College of Applied Medical Sciences and Majmaah University is established by matching their key components.

		Keywords of University Mission			
		Educational programs with high quality	Supporting research & social initiatives	Sustainable development	Instill culture and heritage of the country
Keywords of College Mission	Quality Educational Environment				
	Competitive Professional				
	Research				
	Community Responsibility				

Table B3.1: Consistency between College & University Mission (Annexure B3.1)

		Keywords of College Mission			
		Competitive Professional	Quality Educational Environment	Research	Community Responsibility
Keywords of Program Mission	Enriched Academic Environment				
	Skilled Physical Therapy Professional				
	Advancement of Health Care Services & Research				
	Community partnership				

Table B3.2: Consistency between College & University Mission (Annexure B3.2)

Keywords from the University and College mission were extracted, and words with similar essence were chosen for the Program mission to established consistency.

The program mission keywords were taken and elaborated in statements about the program goals. Below table establishes the program consistency.

Keywords of Program Mission					
	Enriched Academic Environment	Skilled Physical Therapist	Committed to Ethical Practice	Advancement of Health Care Services & Research	Community partnership
Goal (1)					
Goal (2)					
Goal (3)					
Goal (4)					
Goal (5)					

Table B3.3: Consistency between program mission & Goals (Annexure B3.3)

4. Graduate Attributes:

- Mature as a healthcare provider through personal and interpersonal awareness and development to promote quality healthcare delivery.
- Demonstrate reasoning, problem solving, critical thinking, and reflective skills in therapeutic intervention.
- Professionally, ethically, legally, and safely apply and communicate physical therapy principles and procedures across diverse settings and populations to enhance quality of life and guide patients to adapting a healthy lifestyle.
- Apply assessment tools to measure, record, and monitor the effects of therapeutic intervention and patient progress toward his/her restorative goals.

<ul style="list-style-type: none"> - Clearly, accurately, and thoroughly communicate all aspects of patient assessment and care. - Demonstrate the ability to participate as a Physical Therapist in a multi-disciplinary and integrated healthcare environment. - Demonstrate the commitment to intrapersonal and interpersonal growth. 	
5. Program learning Outcomes*	
Knowledge:	
K1	The student will acquire a comprehensive and well-founded knowledge in the field of Physical therapy.
K2	The student will relate appropriate theories, concepts and principles from a range of relevant disciplines to determine the nature and extent of the patient's need for intervention.
K3	The student will recognize the contemporary issues, available scientific evidence, and their impact on current physical therapy practice in order to improve quality of care.
Skills	
S1	The student will develop the process of critical thinking and scholarly inquiry to support clinical reasoning, and evidence-based practice.
S2	The student will integrate the results of patient examination with available scientific evidence for an appropriate physical therapy diagnosis, prognosis and plan of care.
S3	The student will evaluate the effectiveness of interventions to formulate novel, safe and effective Physical therapy management while adapting to the needs and responses of the patient.
S4	The student will demonstrate the manual dexterity skills, to perform elements of examination, evaluation, diagnosis, prognosis, and intervention in a timely manner.
Competence	
C1	The student will consistently demonstrate to expand their knowledge and skills to maintain professional competence, and exercise leadership and innovation for proactive collaboration with others.
C2	The student will practice in an ethical manner, fulfilling an obligation to demonstrate moral responsibility and social justice that are consistent with the needs of the patient and society
C3	The students will develop the capacity to think, write and speak effectively and demonstrate respectful, positive and culturally appropriate behavior while communicating with others.
C4	The student will display the ability to use media and technology and utilize numerical methods to assess the suitability, accuracy and reliability of information from research and reference sources.

* Add a table for each track and exit Point (if any)

Attachments

- Annexure B3.1: MUP01-University & College Mission Consistency Form
- Annexure B3.2: MUP02- College and Program Mission Consistency Form
- Annexure B3.3: MUP03- Program Mission & Goals Consistency Form

C. Curriculum

1. Curriculum Structure

Program Structure	Required/ Elective	No. of courses	Credit Hours	Percentage
Institution Requirements	Required	-	-	
	Elective	6	12	8.76%
College Requirements	Required	1	2	1.46%
	Elective	2	4	2.92%
Program Requirements	Required	41	113	82.48%
	Elective	2	4	2.92%
Capstone Course/Project		1	2	1.46%
Field Experience/ Internship	NA			
Others	NA			
Total		53	137	100%

* Add a table for each track (if any)

2. Program Study Plan

Lev	Course Code	Course Title	Require/ Elective	Pre- Requisite Courses	Credit Hours	Type of requirements (Institution, College or Department)
1 st Year						
1	PENG111	English (1) for the preparatory year	Required	NA	8	Deanship of Preparatory Year
	PMTH112	Introduction to Mathematics 1	Required	NA	2	
	PCOM113	Computer Skills	Required	NA	2	
	PSSC114	Learning Skills and Communication	Required	NA	2	
2	PENG121	English (2) for the preparatory year	Required	NA	6	
	PENG122	English for Health Specialties	Required	NA	2	
	PCHM124	Introduction to Chemistry	Required	NA	2	
	PPHS125	Physics for Health Specialties	Required	NA	2	
	PBIO126	Biology	Required	NA	3	
2 nd Year						
3	PHT211	Basic Anatomy	Required	NA	2	Department
	PHT214	Human Physiology	Required	NA	2	
	PHT212	Musculoskeletal Anatomy	Required	NA	3	
	CAMS231	Emergency Healthcare	Required	NA	2	
	PHT221	Therapeutic Modalities 1	Required	NA	3	University
	***	University Requirement 1	Elective	NA	2	
	***	University Requirement 2	Elective	NA	2	
	***	College Elective-1	Elective	NA	2	
4	PHT223	Measurements in Physical Therapy	Required	PHT 212	3	Department
	PHT213	Neuroanatomy	Required	PHT 212	3	
	PHT222	Therapeutic Modality 2	Required	PHT 221	3	
	PHT218	Introduction to Pathology	Required	PHT 214	2	
	PHT226	Introduction to Biomechanics	Required	PHT 212	2	
	PHT224	Therapeutic Exercise-1	Required	PHT 226	3	
	***	University Requirement-3	Elective	NA	2	University
3 rd Year						
5	PHT325	Therapeutic Exercise-2	Required	PHT 224	3	

Lev	Course Code	Course Title	Require/ Elective	Pre- Requisite Courses	Credit Hours	Type of requirements (Institution, College or Department)
	PHT331	Physical Therapy for Burn and Surgical Conditions	Required	PHT 325	3	Department
	PHT315	Neurophysiology	Required	PHT 213	3	
	PHT327	Human Biomechanics	Required	PHT 226	3	
	***	Department Elective 1	Elective	NA	2	
	***	College elective - 2	Elective	NA	2	College
	***	University Requirements-4	Elective	NA	2	University
6	PHT361	Research Methodology	Required	NA	2	Department
	PHT332	Physical Therapy for Pediatrics	Required	PHT 315	4	
	PHT316	Exercise Physiology	Required	PHT 315	2	
	PHT319	Pharmacology	Required	PHT 218	2	
	PHT333	PT for Sports &Traumatology	Required	PHT 316	2	
	PHT353	Rehabilitation Psychology	Required	PHT 315	2	
	***	Department Elective -2	Elective	NA	2	University
	***	University Requirement - 5	Elective	NA	2	
4 th Year						
7	PHT435	PT for Neurological Disorders	Required	PHT 316	4	Department
	PHT420	Advanced Physical Therapy Procedures	Required	PHT 325	3	
	PHT436	PT for Orthopedics Condition	Required	PHT 333	4	
	PHT419	Reading Medical Imaging	Required	PHT 436	2	
	PHT441	Clinical Practice 1	Required	PHT 331 PHT 332 PHT 333	3	
	PHT454	Orthotics & Prosthetics	Required	PHT 436	2	
8	PHT437	PT for Cardiorespiratory Disorders	Required	PHT 441	3	Department
	PHT443	Selected Clinical Topics	Required	PHT 425 PHT 436	2	
	PHT442	Clinical Practice 2	Required	PHT 437 PHT 438	3	
	PHT445	Occupational Therapy	Required	PHT 420	2	
	PHT456	Management & Ethics in PT	Required	PHT 441	2	
	PHT438	Geriatric Rehabilitation	Required	PHT 436	2	
	PHT457	Independent study	Required	PHT 361	2	
	***	University Requirement - 6	Elective	NA	2	University

* Include additional levels if needed

** Add a table for each track (if any)

3. Course Specifications

Insert hyperlink for all course specifications using NCAAA template

All the course specifications have been uploaded to one drive and can be accessed on the below mentioned link.

https://majmaah-my.sharepoint.com/:f/g/personal/f_ahmad_mu_edu_sa/ElBypqu02iVMmbdwKXp2yc0B6h7McNsRRTIYDYfxt1EWSA?e=5hYb3y

4. Program learning Outcomes Mapping Matrix

Align the program learning outcomes with program courses, according to the following desired levels of performance (I = Introduced P = Practiced M = Mastered)

Course code & No.	Program Learning Outcomes										
	Knowledge			Skills				Competence			
	K.1	K.2	K.3	S.1	S.2	S.3	S.4	C.1	C.2	C.3	C.4
PENG-111								I		I	
PMTH-112	I			I							
PCOM-113								I		I	
PSSC-114								I		I	
PENG-121								I		I	
PENG-122								I		I	
PCHM-124	I			I				I		I	
PPHS-125	I			I							
PBIO-126	I			I							
PHT-211	I			I			I				
PHT-214	I			I			I				
PHT-212	I			I			I				
CAMS-231	I			I							
PHT-221		I			I		I	I		I	
UR-1									I		I
UR-2									I		I
CAMS-232	I			I							
PHT-223		I			I		I	I		I	
PHT-213	I			I			I				
PHT-222		I			I		I	I		I	
PHT-218	I			I							
PHT-226		I			I		I	I		I	
PHT-224		I			I		I	I		I	
UR-3									P		P
PHT-325		P			P		P	P		P	
PHT-331			P			P	P		P		P
PHT-315	P			P			P				
PHT-327		P			P		P	P		P	
PHT-328		P			P		P	P		P	
PHT-329		P			P		P	P		P	
CAMS-233											
UR-4									P		P
PHT-361			P			P			P		P
PHT-332			P			P	P		P		P
PHT-316	P			P			P				
PHT-319	M			M							
PHT-333			P			P	P		P		P
PHT-353	M			M							
PHT-334		M			M						
PHT-352		M			M						
UR-5								M		M	
PHT-435			M			M	M		M		M

Course code & No.	Program Learning Outcomes										
	Knowledge			Skills				Competence			
	K.1	K.2	K.3	S.1	S.2	S.3	S.4	C.1	C.2	C.3	C.4
PHT-420			M			M	M		M		M
PHT-436			M			M	M		M		M
PHT-419	M			M							
PHT-441			M			M	M		M		M
PHT-454	M			M		M	M		M		M
PHT-437			M			M	M		M		M
PHT-443			M			M	M		M		M
PHT-442			M			M	M		M		M
PHT-445		M			M		M	M		M	
PHT-456			M			M			M		
PHT-438			M			M	M		M		M
PHT-457			M			M			M		M
UR-6								M		M	

* Add a table for each track (if any)

5. Teaching and learning strategies to achieve program learning outcomes

Describe policies, teaching and learning strategies, learning experience, and learning activities, including curricular and extra-curricular activities, to achieve the program learning outcomes.

Based on the mission and objectives of the program the program learning outcomes were developed. All the course was then aligned to these program learning outcomes, for each outcome appropriate performance indicators were decided which became the basis for all teaching and assessment activities.

The assessment measures are designed to evaluate the effectiveness of teaching methods for delivering the intended program outcomes. A range of assessments strategies that matches all aspects of the instructional plans are being used for different modules. The assessment strategies are planned to match the instructional goals and objectives at the beginning of the semester and implemented throughout the semester. The selection of appropriate assessments also matches courses and program objectives.

6. Assessment Methods for program learning outcomes.

Describe assessment methods (Direct and Indirect) that can be used to measure achievement of program learning outcomes in every domain of learning.

All the modules of the physical therapy program have specific learning objectives that are aligned with the program outcomes. Each module has 3-5 specific module outcomes, which are evaluated by appropriate assessment methods. Both direct and indirect assessment techniques are utilized to ensure that the desired program outcomes are achieved. The process of assessment is carried out by using a combination of course work such as quizzes, exams, projects, presentations, homework, etc., Where the grades on these exercises are directly tied to the course outcomes.

At the end of each academic year these performance indicators are measured, and their overall consistence is evaluated. Based on the result of this process recommendation for improvement is prepared which are made part of next year's improvement plan.

The Outcome evaluation plan is given below since the inception of the revised curriculum, which was implemented in the year 1435-1436H.

Table 6.1: Direct and Indirect assessment methods for evaluating the program outcomes.

Domain of Learning	Assessment Methods	
	Direct	Indirect
Knowledge		
K1: The student will acquire a comprehensive and well-founded knowledge in the field of Physical therapy.	Written & Oral exams, quizzes etc.	Feedback & Surveys.
K2: The student will relate appropriate theories, concepts and principles from a range of relevant disciplines to determine the nature and extent of the patient's need for intervention.		
K3: The student will recognize the contemporary issues, available scientific evidence, and their impact on current physical therapy practice in order to improve quality of care.		
Skills		
S1: The student will develop the process of critical thinking and scholarly inquiry to support clinical reasoning, and evidence-based practice.	Exams, long and short essays, logbooks, analytical reports, case studies, video analysis, group reports, lab reports, peer evaluations, videos, graphs, viva etc.	Feedback & Surveys.
S2: The student will integrate the results of patient examination with available scientific evidence for an appropriate physical therapy diagnosis, prognosis and plan of care.		
S3: The student will evaluate the effectiveness of interventions to formulate novel, safe and		

effective Physical therapy management while adapting to the needs and responses of the patient.		
S4: The student will demonstrate the manual dexterity skills, to perform elements of examination, evaluation, diagnosis, prognosis, and intervention in a timely manner.	Case presentation, logbooks, analytical reports, case studies, video analysis, group reports etc.	Feedback & Surveys.
Competence		
C1: The student will consistently demonstrate to expand their knowledge and skills to maintain professional competence, and exercise leadership and innovation for proactive collaboration with others.	Case presentation, peer evaluations, attitudes & value assessed through various rubrics, extracurricular activity reports, interviews etc	Feedback & Surveys, GPA, Enrolment & Graduation Stats, Professional Exams, employment rate etc.
C2: The student will practice in an ethical manner, fulfilling an obligation to demonstrate moral responsibility and social justice that are consistent with the needs of the patient and society		
C3: The students will develop the capacity to think, write and speak effectively and demonstrate respectful, positive and culturally appropriate behavior while communicating with others.	Case presentation, assignments, project report, interviews etc.	Feedback & Surveys, GPA, Enrolment & Graduation Stats, Professional Exams, employment rate etc.
C4: The student will display the ability to use media and technology and utilize numerical methods to assess the suitability, accuracy and reliability of information from research and reference sources.		

Courses	1 st Year (2014-2015)		2 nd Year (2015-2016)		3 rd Year (2016-2017)		4 th Year** (2017-2018)	
	S1	S2	S1	S2	S1	S2	S1	S2
111-PENG								
112-PMTH								
124-PCHM								
125-PPHS								
126-PBIO								
PHT-211								
PHT-214								
PHT-221								
PHT-223								
PHT-213								
PHT-325								
PHT-315								
PHT-327								
PHT-361								
PHT-333								
PHT-435								
PHT-420								
PHT-436								
PHT-419								
PHT-441								
PHT-454								
PHT-437								
PHT-443								
PHT-442								
PHT-456								

Table 6.2: Program Outcome Evaluation Plan

**Fourth years onward of implementation of the Curriculum all the Program Outcomes would be measured in an academic year.

Attachments

- Annexure C2: Bachelor of Physical Therapy approved Study Plan
- Annexure C4: MUP12- Program & Course Learning Outcome Alignment X-Matrix
- Annexure C4: MUP13- Program & Course Learning Outcome Alignment IPM-Matrix
- Annexure C6.2: MUP15-Program Outcome Evaluation Plan

D. Student Admission and Support:

1. Student Admission Requirements

The initial enrolment for the program is done once a year at the beginning of each academic year. The enrolment in the program is completely online, the students apply through the deanship of student's admission and registration website. Based on their eligibility and availability of seats, the students are then assigned to different colleges and departments. Total 60 students are accepted in Physical Therapy program every year; maximum 30 students can be admitted at male or female section.

General Requirements for Admission: Majmaah University (MU) has central policies and procedures for admitting and following up the progress of all students throughout the university. The following are admission requirements stipulated for the admission of the new student:

- ✚ An applicant for admission must have a Saudi Secondary School Certificate - Science Section (SSSCSS) or its equivalent. The secondary school certificate should not be more than five years old and the Rector of the University may give exemption from this condition.
- ✚ Must have an Aptitude Test Certificate (ATC) administered by the National Center for Assessment in Higher Education.
- ✚ The minimum qualifying scores in SSSCSS & ATC tests are: (a) A total equivalent percentage of 75% (based on 30% from the SSSCSS + 30% from the ATC + 40% from cumulative basic Science of SSSCSS).
- ✚ Must not have been dismissed from another university for disciplinary reasons.

When applicants exceed availability, priority is given to the students with higher grades.

2. Guidance and Orientation Programs for New Students

Induction and career development programs at the College/Department provide students with opportunities to build productive and satisfying careers while contributing to the achievement of the College/Department mission. The Vice Deanship for student affairs unit along with the department prepares Induction seminars for newly joined students. It also in identifying the student needs and sets strategies to meet those needs.

3. Student Counseling Services

(academic, career, psychological and social)

The process of advising at the Department of Physical Therapy students starts with an orientation program specifically designed to inform the new students about the various program at the college. Faculty members present lectures from each program.

CAMS have a system for student advising which includes a college committee for advising, where a faculty member represents each program.

After enrolment to the Physical therapy program all the students are assigned an academic advisor from the faculty member, who assists him in getting familiar with the available services, understanding the University and Program policies, curriculum, and any issue affecting the teaching and learning experience. The academic advisor is also responsible for monitoring and guiding the student progress throughout his academic education. Each semester, the department holds a meeting with students where the students and faculty exchange views and opinions regarding curricular, extracurricular and career matters.

The student's workload is assigned based on his cumulative GPA every semester. The students with GPA of 2.0 are eligible to register up to 14 credit hours, while those of 4.5 GPA or above are eligible for up to 20 credits as a maximum. Students are allowed to take the maximum credit of 23 if he is in final level of graduation. In special cases students are allowed to take up to 25 credits provided the Department council approves the case.

4. Support for Special Need Students

(low achievers, disabled, gifted and talented)

The Physical therapy program prepare graduates for an applied profession which demands that all enrolled students are physically and mentally fit for the purpose of safe practice. Physical therapy program does not accept applicants with disabilities that prevent them from achieving such purpose.

E. Teaching and Administrative Staff

1. Needed Teaching and Administrative Staff

Academic Rank	Specialty		Special Requirements / Skills (if any)	Required Numbers		
	General	Specific		M	F	T
Professors	Physical Therapy	Orthopedics		1	1	2
		Neurology		1	1	2
		Cardiopulmonary		1	1	2
		Pediatrics		1	1	2
		Sports & Biomechanics		1	1	2
Associate Professors	Physical Therapy	Orthopedics		1	1	2

Academic Rank	Specialty		Special Requirements / Skills (if any)	Required Numbers		
	General	Specific		M	F	T
		Neurology		1	1	2
		Cardiopulmonary		1	1	2
		Pediatrics		1	1	2
		Sports & Biomechanics		1	1	2
Assistant Professors	Physical Therapy	Orthopedics		2	2	4
		Neurology		2	2	4
		Cardiopulmonary		2	2	4
		Pediatrics		2	2	4
		Biomechanics		2	2	4
		Burns & Surgical		2	2	4
		Physical Therapy		2	2	4
Lecturers	Physical Therapy	Physical Therapy		8	8	16
Teaching Assistants	Physical Therapy	Physical Therapy		4	4	8
Technicians and Laboratory Assistants	Physical Therapy	Physical Therapy		4	4	8
Administrative and Supportive Staff	Bachelor's degree	Bachelor Degree		5	5	10
Others (specify)						

2. Professional Development

2.1 Orientation of New Teaching Staff

Describe briefly the process used for orientation of new, visiting and part-time teaching staff

Induction and career development programs at the College/Department provide faculty with opportunities to build productive and satisfying careers while contributing to the achievement of the College/Department mission. The Vice Deanship for Quality & Skills Development along with the department prepares Induction workshops and seminars for newly joined and visiting faculties. It also in identifying the staff needs and sets strategies to meet those needs.

2.2 Professional Development for Teaching Staff

Describe briefly the plan and arrangements for academic and professional development of teaching staff (e.g., teaching & learning strategies, learning outcomes assessment, professional development, etc.)

All College staff members are encouraged to regularly attend training and professional-development workshops held either within University, by the Deanship of Quality and Skills Development, or at other national and international institutions. The College has a policy to reward outstanding academic, technical and administrative performance. Such rewards include recognition of their merit by announcing on the website the name of the employee of the month|| in recognition of his/her outstanding performance.

All the faculty member is entitled to attend national and international conferences, symposia and workshops. Faculty members are given financial support for transportation, conference/workshop registration fees and living allowance for the event duration.

F. Learning Resources, Facilities, and Equipment

1. Learning Resources.

Mechanism for providing and quality assurance of learning resources (textbooks, references and other resource materials, including electronic and web-based resources, etc.)

As part of the course planning, the textbook and other reference material are provided in the Course Specification for all the courses. These requirements are after review and approval from the department council is provide to the competent authority for procurement.

2. Facilities and Equipment

(Library, laboratories, medical facilities, classrooms, etc.).

Based on the recommendation from the Course Coordinators and relevant unit/s the department send the list of requirements for Reference Books, Lab Equipment/Consumables and other teaching materials to the relevant Vice Deanships. These recommendations are considering as part of the College Annual Improvement and Action plan.

3. Arrangements to Maintain a Healthy and Safe Environment (According to the nature of the program)

The College confirms to the guidelines of department of health and other local and national regulatory authorities for health and safety measure.

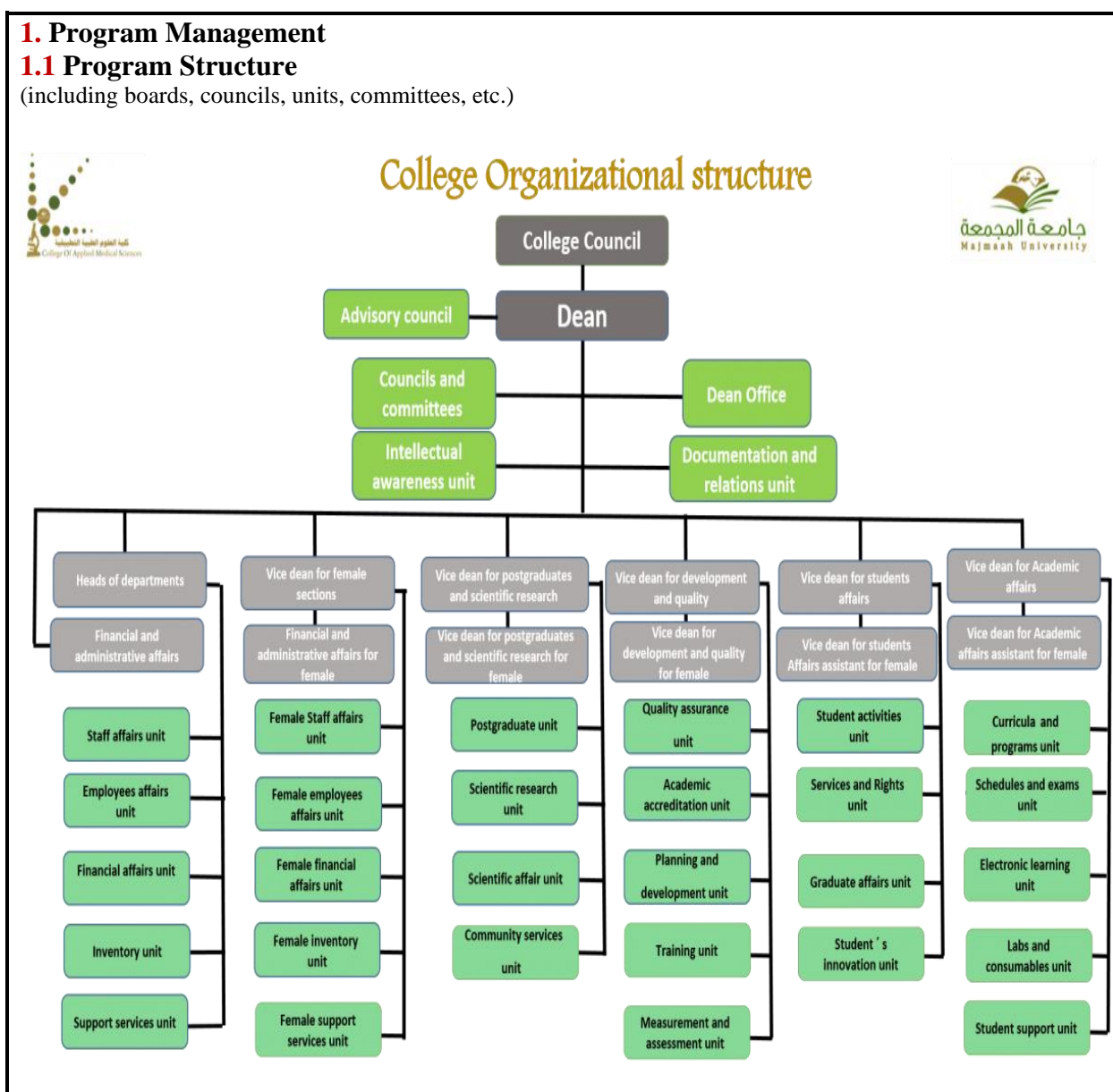
Annual inspection by the relevant authorities are conducted for auditing the CAMS facilities. After audit the college is certified by OHSAS.

G. Program Management and Regulations

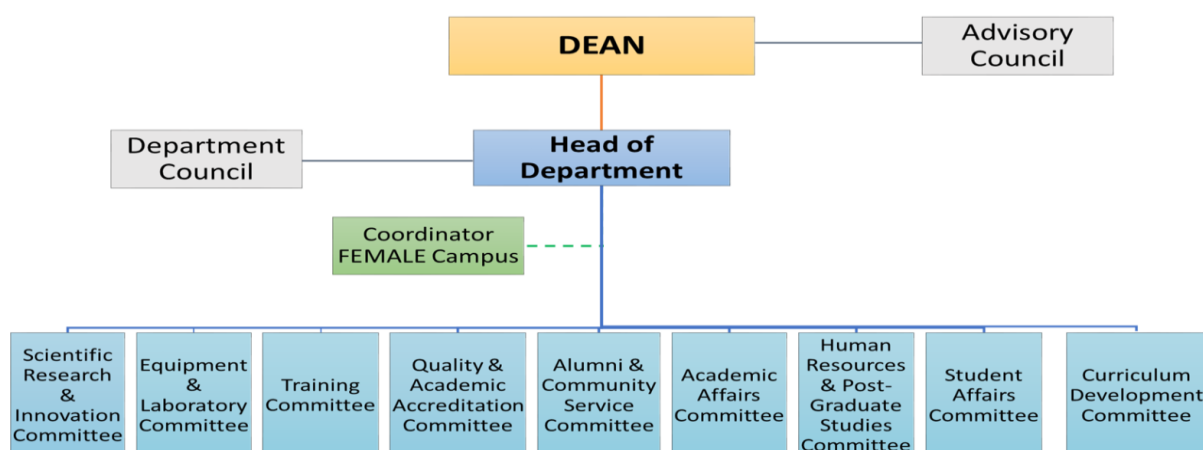
1. Program Management

1.1 Program Structure

(including boards, councils, units, committees, etc.)



4. Insert program administrative flowchart:



1.2 Stakeholders Involvement

Describe the representation and involvement of stakeholders in the program planning and development. (students, professional bodies, scientific societies, alumni, employers, etc.)

- The advisory Committee consist of the members from all the stakeholder associated with the program. This committee meets at least once every year where they are provided with all the program data including the Annual Program report and the proposed Improvement plan for the next year. Their feedback and recommendation are included for the betterment of the program.
- The students are considered the most important aspect of the whole teaching and learning at the department therefore they play a very active role in the program development, therefore their feedbacks are taken at various level of program during their tenure.
- Most important among them are; Course Evaluation Survey, Outcome evaluation survey, Program Evaluation Survey, Program Satisfaction Survey, internship survey etc. There is also a student advisory board at the level of college which is consulted periodically every year.
- The advisors and other stakeholders are consulted for any major changes in the program. There feedbacks are taken for curriculum development and for the strategic plan for the program.
- Annually employer satisfaction survey is conducted, and its result is considered for the next year's annual improvement plan. Recommendations from the above processes are incorporated in annual improvement/action plan.

2. Program Regulations

Provide a list of related program regulations, including their link to online version: admission, study and exams, recruitment, appeals and complaint regulations, etc.)

A. Attendance and Completion Requirements

a. Attendance.

1. The regular student must attend the lectures. He shall be debarred from the final examination if the percentage of his attendance is less than the percentage fixed by the University Council, provided it is not less than (75%) of the lectures for each course during the semester. The student who is debarred, because of absence, is considered as a failure in the course, and will be awarded the denial grade (DN).
2. The student shall be debarred from the final examination if the percentage of his absence exceeds (25%) out of the total lectures of the course without an acceptable excuse.
3. The student who is debarred from the examination because of absence is considered as a failure in the course. He will be awarded the score of the course work and given the denial grade (DN).
4. The lists of the debarred students shall be approved by the concerned College Board.
5. The lists of the debarred students shall be announced before the beginning of the final examinations.
6. The College Board or whoever it delegates may, exceptionally, forward the debarred students lists and allow the students for entering the examination, provided he will give an acceptable excuse to the board. The University Council will determine the percentage of absence, provided it shall not be less than (50%) of the lectures for the course.

b. Progression from year to year.

The student must commit to attending the classes from the first day for the beginning of the semester in accordance with the university academic calendar.

1. Registration:
 - i. The student is availed the courses he wishes to study or drop according to the following:
 - ii. The student may add the courses he wishes to study a week before the beginning of the academic year and ends by the end of the first week.
 - iii. The student may drop the courses he does not wish to study until the end of the second week from the beginning of the academic year.
 - iv. Registration must not exceed the maximum credit hours and not be less than the minimum as shall be mentioned in the fourth paragraph of this regulation.
 - v. The process of the registration of the courses for the student is done in consultation with his academic supervisor. The student bears the responsibility of any deficiency or errors caused by ignorance of the instructions.

- vi. The student must complete the procedures of registration by himself, he is not entitled to assigned this responsibility to his representative at all.
- vii. The registration process can be performed automatically for students of a certain college or level if necessary.
- viii. If the student does not register for any course during the regular registration period, he shall be considered as leaving study.

2. Academic Load:

- i. Academic load refers to the total credit hours for the courses the student registers for in the semester. It is determined in accordance to the following regulations:
- ii. The minimum academic load is 12credit hours for a semester.
- iii. The maximum academic load is 20 credit hours per semester and 10 credit hours for the summer semester.
- iv. The student who has an academic probation shall not be allowed to increase his academic load to more than 14 credit hours.
- v. The student who has a Pass Grade shall not be allowed to increase his academic load to more than 16 credit hours.
- vi. The student on the threshold of graduation is allowed to exceed the maximum, the increase being not more than three credit hours.

3. Academic Probation

- i. The student shall be given an academic probation if his CGPA becomes less than 2.00 out of 5.00.

c. Program completion

- 1. The student graduates after completing the requirements of graduation successfully, according to the syllabus, provided that his Cumulative Average is not less than the rate determined by the concerned university council for each specialization. In all cases it should not be less than thePass grade.
- 2. According to the recommendation of the concerned Department Board, the College Board may require the student to repeat, based on his Cumulative Average, in case of his success in the courses and failure in Cumulative Average, according to the following rules:
 - a. A condition for eliminating any grade for a course the student had studied is that he repeats and passes it.
 - b. The total credit hours for the courses eliminated from the Cumulative Average should not be more than 15% of the total credit hours of the syllabus.
 - c. In re-calculating the Cumulative Average, only the following grades may be eliminated: Fail (F), (Debarred (D), Withdrawal because of failure (WF).

The student shall not be considered a graduate until the issuance of approval of the University Council, awarding him the degree.

B. Student Appeals Process

A decision reached by a Student Conduct Administrator may be appealed by the respondent(s) or the complainant(s) to the Dean of Student Affairs within five (5) business days of the decision. Appeals must be made in writing and state the reason(s) for the appeal. The decision at each level is based on the written information provided by the Student Conduct Administrator/appeal officer, the respondent, and the complainant (if applicable) for the appeal. Appeals must be delivered in person to the Office of the Dean of Student Affairs. If the Dean of Student Affairs was the Student Conduct Administrator in a given case the appeal will be considered by the Vice Rector for Academic Affairs. Failure to submit an appeal, meeting the above requirements will result in the decision of the Student Conduct Administrator being final. The bases for appeals are limited to the following:

- a. A procedural error or omission occurred that significantly impacted the outcome.
- b. The presentation of new information, that was previously unknown, or other relevant facts unknown or unavailable during the hearing that could sufficiently alter the decision. A summary of this new information and its potential impact upon the outcome must be included in the appeal. Failure to participate in the hearing may not be used as a basis for filing an appeal under this action.
- b. Sanctions imposed are substantially disproportionate to the severity of the violation.

Options for Appeal:

Level I: Decisions of the Student Conduct Administrator may be appealed to the Dean of Student Affairs. The appeal officer may affirm, reverse or modify the original decision regarding the violations and/or sanctions imposed. The original finding and sanction(s) will stand if the appeal is not timely or is not based on the grounds listed above. For conduct cases involving a complainant other than the University, when one party requests an appeal, the other party (parties) will be notified and given up to five business days to respond. After those five business days, or upon receiving appeal requests from all parties involved, a decision will be rendered within ten

business days. Appeals for findings involving the Discrimination, Harassment, and Misconduct Policy start at Level II.

Level II: Decisions of the Dean of Student Affairs may be appealed to the Vice Rector for Academic Affairs, within five business days following the above outlined procedures. The Vice Rector for Academic Affairs or designee will render a decision within ten business days. Decisions of the Vice Rector for Academic Affairs are final from the perspective of the University.

Level III: A respondent or complainant may request a discretionary review of the Level II appeal decision by the University Rector. The Rector has discretionary authority to grant or deny the request to review the decision. When the Rector decides to review the Level II appeal, the Rector's decision becomes the final decision of the University

H. Program Quality Assurance

1. Program Quality Assurance System

Provide online link to quality assurance manual

At the beginning of each semester,

- The module coordinators are decided and provided with the approved module specification to be taught.
- This module specification along with assessment rubrics and any other relevant information are provided to all the students taking that module.
- One of the main responsibility of the module coordinator is to ensure the timely and uniform delivery/assessment of the module at all the sections it is being taught in that particular semester.
- The module coordinator after consultation with all the teachers send recommendations in the course report regarding revision of the module learning outcome, revision of the assessment mode, modification of course content, requirements for special tools/equipment for implementing the module objectives or any other difficulty faced during that semester.
- This course report is then deliberated upon by the Academic Advisory Committee, Quality Assurance Committee and the Department council.
- If required, an internal/external expert committee is constituted for module evaluation.

The assessment measures are designed to evaluate the effectiveness of teaching methods for delivering the intended program outcomes. A range of assessments strategies that matches all aspects of the instructional plans are being used for different modules. The assessment strategies are planned to match the instructional goals and objectives at the beginning of the semester, and implemented throughout the semester. The selection of appropriate assessments also matches courses and program objectives. All the modules of the physical therapy program have specific learning objectives that are aligned with the program outcomes. Each module has 3-5 specific module outcomes, which are evaluated by appropriate assessment methods. Both direct and indirect assessment techniques are utilized to ensure that the desired program outcomes are achieved. The process of assessment is carried out by using a combination of course work such as quizzes, exams, projects, presentations, homework, etc., Where the grades on these exercises are directly tied to the course outcomes.

At the end of each academic year these performance indicators are measured and their overall consistence is evaluated. Based on the result of this process recommendation for improvement is prepared which are made part of next year's improvement plan.

3. Arrangements to Monitor Quality of Courses Taught by other Departments.

In case unavailability of a specialist for a program the department sends the recommendations along with the course requirements in terms of Course Specification, Course Blueprint and matrix etc. to the concerned vice deanship which communicate either with other Department/College of hire an expert on part-time basis.

The Students at Physical Therapy program need to take, Preparatory year Course, University Requirements courses & College elective courses. These courses are offered by Deanship of Preparatory Year, CAMS Vice Deanship, other colleges, and departments. To ensure the course confirms to the program needs, the following steps are taken/proposed.

1. Preparation & review of Course Specification in consultation with the program coordinators. (Proposed)
2. Approval of Course report & Evaluation by department coordinator. (Proposed)

3. Scheduled meeting with the course instructor and the respective departments for effective implementation of the course each semester. (Existing)

4. Arrangements Used to Ensure the Consistency between Main Campus and Branches
(including male and female sections)

To ensure the uniformity the program assigns a course coordinator at beginning of each semester. The coordinator along with the course team in all the sections prepares the course specifications, assessment schedule and study materials, including blueprint and lecture objectives, lab/clinical objectives, to ensure uniform delivery & assessment of course in all the section. The assessment measures are designed to evaluate the effectiveness of teaching methods for delivering the intended program outcomes. A range of assessments strategies that matches all aspects of the instructional plans are being used for different modules. The assessment strategies are planned to match the instructional goals and objectives at the beginning of the semester and implemented throughout the semester. The selection of appropriate assessments also matches courses and program objectives. All the modules of the physical therapy program have specific learning objectives that are aligned with the program outcomes. Each module has 3-5 specific module outcomes, which are evaluated by appropriate assessment methods. Both direct and indirect assessment techniques are utilized to ensure that the desired program outcomes are achieved. The process of assessment is carried out by using a combination of course work such as quizzes, exams, projects, presentations, homework, etc., Where the grades on these exercises are directly tied to the course outcomes.

5. Arrangements to Apply the Institutional Regulations Governing the Educational and Research Partnerships (if any).

NONE

6. Assessment Plan for Program Learning Outcomes (PLOs), and Mechanisms of Using its Results in the Development Processes

Based on the mission and objectives of the program the program learning outcomes were developed. All the course was then aligned to these program learning outcomes, for each outcome appropriate performance indicators were decided which became the basis for all teaching and assessment activities.

The assessment measures are designed to evaluate the effectiveness of teaching methods for delivering the intended program outcomes. A range of assessments strategies that matches all aspects of the instructional plans are being used for different modules. The assessment strategies are planned to match the instructional goals and objectives at the beginning of the semester and implemented throughout the semester. The selection of appropriate assessments also matches courses and program objectives. All the modules of the physical therapy program have specific learning objectives that are aligned with the program outcomes. Each module has 3-5 specific module outcomes, which are evaluated by appropriate assessment methods. Both direct and indirect assessment techniques are utilized to ensure that the desired program outcomes are achieved. The process of assessment is carried out by using a combination of course work such as quizzes, exams, projects, presentations, homework, etc., Where the grades on these exercises are directly tied to the course outcomes.

At the end of each academic year these performance indicators are measured, and their overall consistence is evaluated. Based on the result of this process recommendation for improvement is prepared which are made part of next year's improvement plan.

7. Program Evaluation Matrix

Evaluation Areas/Aspects	Evaluation Sources/References	Evaluation Methods	Evaluation Time
1. Achievement of Mission and Goals	Students, graduates, alumni, faculty, program leaders, administrative staff, employers, independent reviewers	Surveys, DATA & KPI's	Every three year
2. Governance & Administration	Students, graduates, alumni, faculty, program leaders, administrative staff, employers, independent reviewers	Surveys, Interview, visit, DATA & KPI's	End of academic year
3. Management of Quality Assurance and Improvement	Students, graduates, alumni, faculty, program leaders, administrative staff, employers, independent reviewers	Surveys, DATA, KPI's & Outcome evaluation	End of academic year
4. Effectiveness of teaching & assessment	Students, graduates, alumni, faculty, employers, independent reviewers	Surveys, DATA & KPI's	End of academic year
5. Learning resources, facility & equipment's	Students, graduates, alumni, faculty	Surveys, DATA & KPI's	End of academic year
6. Program evaluation	Students, graduates, alumni, faculty, program leaders, administrative staff, employers, independent reviewers	Surveys, Interview, visit, DATA & KPI's	End of academic year
7. Curriculum evaluation	Students, graduates, alumni, faculty, program leaders, administrative staff, employers, independent reviewers	Surveys, Interview, visit, DATA & KPI's	End of five-year cycle.
8. Student Administration and Support Services	Students, graduates, alumni, faculty	Surveys, DATA & KPI's	End of academic year
9. Faculty and Staff Employment Processes	Faculty, program leaders, Advisory board etc	Surveys, Interview, DATA & KPI's	End of academic year
10. Research & Community Service	Students, graduates, alumni, faculty, program leaders, administrative staff, employers, independent reviewers	Surveys, Interview, visit, DATA & KPI's	End of academic year

Evaluation Areas/Aspects (e.g., leadership, effectiveness of teaching & assessment, learning resources, partnerships, etc.)

Evaluation Sources (students, graduates, alumni, faculty, program leaders, administrative staff, employers, independent reviewers, and others (specify))

Evaluation Methods (e.g., Surveys, interviews, visits, etc.)

Evaluation Time (e.g., beginning of semesters, end of academic year, etc.)

8. Program KPIs*

The period to achieve the target (1441-42H) year.

N o	KPIs Code	KPIs	Target	Measurement Methods	Measurement Time
1.	KPI-P-01	Stakeholders' awareness ratings of the Mission Statement and Objectives.	4.5	Survey	End of the academic year
2.	KPI-P-02	Stakeholder evaluation of the Policy Handbook, including administrative flow chart and job responsibilities.	4.5	Survey	End of the academic year
3.	KPI-P-03	Students' overall evaluation on the quality of their learning experiences.	4.5	Survey	End of the academic year
4.	KPI-P-06	Proportion of courses in which student evaluations were conducted during the year.	90%	Data	End of the academic year
5.	KPI-P-05	Proportion of programs in which there was an independent verification, within the institution, of standards of student achievement during the year.	100%	Data	End of the academic year
6.	KPI-P-09	Ratio of students to teaching staff.	1:8	Data	End of the academic year
7.	KPI-P-08	Students overall rating on the quality of their courses.	4.5	Survey	End of the academic year
8.	KPI-P-10	Proportion of teaching staff with verified doctoral qualifications.	75%	Data	End of the academic year
9.	KPI-P-11	Percentage of students entering programs who successfully complete first year.	90%	Data	End of the academic year
10.	KPI-P-12	Proportion of students entering undergraduate programs who complete those programs in minimum time.	75%	Data	End of the academic year
11.	KPI-P-13	Proportion of graduates from undergraduate programs who within six months of graduation are: (a) employed (b) enrolled in further study not seeking employment or further study	(a) 60% (b) 40%	Data	End of the academic year
12.	KPI-P-16	Student evaluation of academic and career counselling	4.5	Survey	End of the academic year
13.	KPI-P-22	Stakeholder evaluation of library and media center.	4.5	Survey	End of the academic year
14.	KPI-P-23	Stakeholder evaluation of the digital library.	4.5	Survey	End of the academic year
15.	KPI-P-24	Stakeholder evaluation of the IT services.	4.5	Survey	End of the academic year
16.	KPI-P-25	Stakeholder evaluation of e-learning services.	4.5	Survey	End of the academic year
17.	KPI-P-26	Proportion of teaching staff leaving the institution in the past year for reasons other than age retirement.	5%	Data	End of the academic year
18.	KPI-P-27	Proportion of teaching staff participating in professional	90%	Data	End of the academic year

N o	KPIs Code	KPIs	Target	Measurement Methods	Measurement Time
		development activities during the past year.			
19.	KPI-P-28	Number of refereed publications in the previous year per full time equivalent teaching staff.	2:1	Data	End of the academic year
20.	KPI-P-29	Number of citations in refereed journals in the previous year per full time equivalent faculty members.	25:1	Data	End of the academic year
21.	KPI-P-30	Proportion of full-time member of teaching staff with at least one refereed publication during the previous year.	100%	Data	End of the academic year
22.	KPI-P-31	Number of papers or reports presented at academic conferences during the past year per full time equivalent faculty members.	1:1	Data	End of the academic year
23.	KPI-P-34	Proportion of full-time teaching and other staff actively engaged in community service activities.	90%	Data	End of the academic year
24.	KPI-P-35	Number of community education programs provided as a proportion of the number of departments.	10	Data	End of the academic year
25.	KPI-P-36	Proportion of strategic plan KPI's completion	75%	Data	End of the academic year
26.	KPI-P-37	Proportion of action plan initiatives completion.	75%	Data	End of the academic year

* including KPIs required by NCAAA

I. Specification Approval Data

Council / Committee	MAJMAAH UNIVERSITY HIGHER ACDEMIC COUNCIL
Reference No.	1635
Date	04/09/1435

List of Attachments:

- 1) Annexure B3.1: MUP01-University & College Mission Consistency Form
- 2) Annexure B3.2: MUP02- College and Program Mission Consistency Form
- 3) Annexure B3.3: MUP03- Program Mission & Goals Consistency Form
- 4) Annexure C2: Bachelor of Physical Therapy approved Study Plan
- 5) Annexure C4: MUP12- Program & Course Learning Outcome Alignment X-Matrix
- 6) Annexure C4: MUP13- Program & Course Learning Outcome Alignment IPM-Matrix
- 7) Annexure C6.2: MUP15-Program Outcome Evaluation Plan
- 8) Annexure I1: University Approval of the Physical Therapy curriculum and program Specification.
- 9) Annexure I2: Acceptance of modified program Specification.
- 10) Annexure I3 Acceptance of modified alignment of Program outcomes as per SAQF domains of learning

ANNEXURE

ANNEXURE B3.1

MUP01-UNIVERSITY & COLLEGE MISSION

CONSISTENCY FORM

Consistency between University & college Missions

Code
MUP01

College: Applied Medical Sciences Department: Physical therapy & Health Rehabilitation

Program: Physical Therapy

College mission Keywords University mission Keywords		University mission			
		<p><i>The mission of Majmaah University is to offer educational programs with high quality as well as funding all types of research projects and social initiatives that contribute in achieving the sustainable development. We also committed to instill the concept of patriotism and educate students about the culture and heritage of the country.</i></p>			
		Educational programs with high quality	Supporting research and social initiatives	Sustainable development	Instill culture and heritage of the country
College mission	Quality education environment				
	Competitive professional				
	Research				
	Community responsibility				

The current mission of College: *Preparation of competitive applied medical competencies through quality education environment, supporting the scientific research and community responsibility.*

ANNEXURE B3.2

MUP02- COLLEGE AND PROGRAM

MISSION CONSISTENCY FORM

Consistency between College & Program Mission

Code
MUP02

College: Applied Medical Sciences Department: Physical therapy & Health Rehabilitation
Program: Physical Therapy

<div>Program mission Keywords</div> <div>College mission Keywords</div>		College Mission <i>Preparation of competencies in applied medical field through quality education supporting the scientific research and community responsibility.</i>			
		Applied Medical Competencies	Quality Educational Environment	Scientific Research	Community Responsibility
Program Mission	Enriched Academic Environment				
	Skilled Physical Therapy Professional				
	Advancement of Health Care Services & Research				
	Community partnership				

The Current Mission of Program: *Nurture an enriched academic environment to prepare skilled physical therapy professional dedicated to the advancement of health care services, research and community partnership.*

ANNEXURE B3.3

MUP03- PROGRAM MISSION & GOALS

CONSISTENCY FORM

Consistency between program mission and program goals

Code
MUP03

College: Applied Medical Sciences Department: Physical therapy & Health Rehabilitation
Program: Physical Therapy

		Program Mission				
		KW1 Enriched Academic Environment	KW2 Skilled Physical Therapist	KW3 Committed to Practice Ethically	KW4 Advancement of Healthcare Services & Research	KW4 Community Partnership
Program Goal	Goal (1)					
	Goal (2)					
	Goal (3)					
	Goal (4)					
	Goal (5)					

(KW) Programme Mission keywords

Program Goals:

1	Prepare physical therapy professionals sensitive to the evolving concept of comprehensive rehabilitation and prepared to cooperate with other health professionals in meeting the changing health needs of society.
2	Develop creative and flexible educational approaches to provide outstanding educational experiences to our students in order to develop expertise in the profession of physical therapy and health rehabilitation.
3	Contribute to the advancement of knowledge in physical therapy and rehabilitation through scholarly inquiry and research for assuming responsibilities in the areas of patient care, administration and education.
4	Model leadership, professionalism, and lifelong learning through involvement in the professional development forums and community interdisciplinary collaboration.
5	Cultivate knowledge, understanding and appreciation of the social, political and economic aspects of health to practice in an ethical and legal manner.

ANNEXURE C2

BACHELOR OF PHYSICAL THERAPY

APPROVED STUDY PLAN

Study Plan

Degree : Bachelor	Faculty : College Of Applied Medical Sciences	Hrs : 136
Semester : 331	Dept :	Plan : Major
Edition : 2	Gender : Both	
Major : RHL56		

Council Session:	Deanship Session:	Faculty Session:	Dept Session:
Council Date:	Deanship Date:	Faculty Date:	Dept Date:

Group Type: Compulsory (29)

First				
Course code	Course Name	H	Requisits	Yrl
PENG 111	English (1) for Preparatory Year	8		
PMTH 112	Introduction to Mathematics (1)	2		
PCOM 113	Computer Skills	2		
PSSC 114	Learning & Communication Skills	2		
Total			14	

Third				
Course code	Course Name	H	Requisits	Yrl
PHT 211		2		
PHT 212		3		
PHT 214		2		
PHT 221		3		
CAMS 231	Emergency Care	2		
Total			12	

Fifth				
Course code	Course Name	H	Requisits	Yrl
PHT 315	Neurophysiology	3	PHT 213 -	
PHT 325	Therapeutic Exercise?2	3	PHT 224 -	
PHT 327	Human Biomechanics	3	PHT 226 -	
PHT 331	Physical Therapy for Burn and Surgical Conditions	3	PHT 325 -	
Total			12	

Second				
Course code	Course Name	H	Requisits	Yrl
PENG 121	English (2) for Preparatory Year	6		
PENG 122	English for Medical Specialities	2		
PCHM 124	Introduction to Chemistry	2		
PPHS 125	Physics for Health Purposes	2		
PBIO 126	Biological Science	3		
Total			15	

Forth				
Course code	Course Name	H	Requisits	Yrl
PHT 213	Neuroanatomy	3	PHT 212 -	
PHT 218	Introduction pathology	2	PHT 214 -	
PHT 222	Therapeutic Modalities 2	3	PHT 221 -	
PHT 223	Measurements in Physical Therapy	3	PHT 212 -	
PHT 224	Therapeutic exercise 1	3	PHT 226 -	
PHT 226	Introduction to Biomechanics	2	PHT 212 -	
Total			16	

Sixth				
Course code	Course Name	H	Requisits	Yrl
PHT 316	Exercise Physiology	2	PHT 315 -	
PHT 319	Pharmacology	2	PHT 218 -	
PHT 332	Physical Therapy for Pediatrics	4	PHT 315 -	
PHT 333	Physical Therapy for Sports & Traumatology	2	PHT 316 -	
PHT 353	Rehabilitation Psychology	2	PHT 315 -	
PHT 361	Research Methodology	2		
Total			14	

Study Plan

Council Session:

Deanship Session:

Faculty Session:

Dept Session:

Council Date:

Deanship Date:

Faculty Date:

Dept Date:

Seventh				
Course code	Course Name	H	Requisits	Yrl
PHT 419	Reading Medical Imaging	2	PHT 436 -	
PHT 420	Advanced Physical Therapy Procedures	3	PHT 325 -	
PHT 435	Physical Therapy for Neurological Disorders	4	PHT 316 -	
PHT 436	Physical Therapy for Orthopedics Condition	4	PHT 333 -	
PHT 441	Clinical Practice 1	3	PHT 331 - / P PHT 332 - / P PHT 333 -	
PHT 454	Orthotics & Prosthetics	2	PHT 436 -	
Total			18	

Eighth				
Course code	Course Name	H	Requisits	Yrl
PHT 437	Physical Therapy for Cardio Respiratory Disorders	2	PHT 441 -	
PHT 438	Geriatric Rehabilitation	2	PHT 436 -	
PHT 442	Clinical Practice 2	3	PHT 437 - / Co PHT 438 -	
PHT 443	Selected Clinical Topics	2	PHT 436 -	
PHT 445	Occupational Therapy	2	PHT 420 -	
PHT 456	Management & Ethics in Physical Therapy Services	2	PHT 441 -	
PHT 457	Independent study	2	PHT 361 -	
Total			15	

Study Plan

Council Session:

Deanship Session:

Faculty Session:

Dept Session:

Council Date:

Deanship Date:

Faculty Date:

Dept Date:

Group Type: Elective (4)

SOCI 101	Contemporary Societal Issues	2		
Course code	Course Name	H	Requisits	Yrl
AKAD 105	Arabic Editing	2		
ENG 101	English Language	2		
ENT 101	Entrepreneurship	2		
FCH 101	Family & Childhood	2		
HAF 101	Fundamentals of Health & Physical Fitness	2		
LHR 101	Legislations & Human Rights	2		
SALM 101	Introduction to Islamic Culture	2		
SALM 102	Islam & Construction of Society	2		
SALM 103	Islamic Economic System	2		
SALM 104	Fundamentals of Islamic Politics	2		
VOW 101	Voluntary Work	2		
Total			26	

PHT 328	Hydrotherapy	2		
Course code	Course Name	H	Requisits	Yrl
Total			4	

CAMS 232		2		
Course code	Course Name	H	Requisits	Yrl
CAMS 234		2		
Total			6	

PHT 334	Physiotherapy For Women's	2		
Course code	Course Name	H	Requisits	Yrl
	Development			
Total			4	

ANNEXURE C4

MUP12- PROGRAM & COURSE LEARNING

OUTCOME ALIGNMENT X-MATRIX

College: Applied Medical Sciences **Department:** Physical therapy & Health Rehabilitation

Program: Bachelor of Physical Therapy

Program Outcomes to Course Learning Outcome IPE Matrix

Code
MUP13

(I=Introduced P=Practiced M=Mastered)

Student Learning Outcomes												
Learning Domain		Knowledge			Skills				Competence			
		K.1	K.2	K.3	S.1	S.2	S.3	S.4	C.1	C.2	C.3	C.4
<i>courses</i>	PENG-111								I		I	
	PMTH-112	I			I							
	PCOM-113								I		I	
	PSSC-114								I		I	
	PENG-121								I		I	
	PENG-122								I		I	
	PCHM-124	I			I				I		I	
	PPHS-125	I			I							
	PBIO-126	I			I							
	PHT-211	I			I			I				
	PHT-214	I			I			I				
	PHT-212	I			I			I				
	CAMS-231	I			I							
	PHT-221		I			I		I	I		I	
	UR-1									I		I
	UR-2									I		I
	CAMS-232	I			I							
	PHT-223		I			I		I	I		I	

College: Applied Medical Sciences **Department:** Physical therapy & Health Rehabilitation

Program: Bachelor of Physical Therapy

Program Outcomes to Course Learning Outcome IPE Matrix

Code
MUP13

(I=Introduced P=Practiced M=Mastered)

Student Learning Outcomes												
Learning Domain		Knowledge			Skills				Competence			
Code		K.1	K.2	K.3	S.1	S.2	S.3	S.4	C.1	C.2	C.3	C.4
courses	PHT-213	I			I			I				
	PHT-222		I			I		I	I		I	
	PHT-218	I			I							
	PHT-226		I			I		I	I		I	
	PHT-224		I			I		I	I		I	
	UR-3									P		P
	PHT-325		P			P		P	P		P	
	PHT-331			P			P	P		P		P
	PHT-315	P			P			P				
	PHT-327		P			P		P	P		P	
	PHT-328		P			P		P	P		P	
	PHT-329		P			P		P	P		P	
	CAMS-233											
	UR-4									P		P
	PHT-361			P			P			P		P
	PHT-332			P			P	P		P		P
	PHT-316	P			P			P				
	PHT-319	M			M							

College: Applied Medical Sciences **Department:** Physical therapy & Health Rehabilitation

Program: Bachelor of Physical Therapy

Program Outcomes to Course Learning Outcome IPE Matrix

Code
MUP13

(I=Introduced P=Practiced M=Mastered)

Student Learning Outcomes												
Learning Domain		Knowledge			Skills				Competence			
		K.1	K.2	K.3	S.1	S.2	S.3	S.4	C.1	C.2	C.3	C.4
<i>courses</i>	PHT-333			P			P	P		P		P
	PHT-353	M			M							
	PHT-334		M			M						
	PHT-352		M			M						
	UR-5								M		M	
	PHT-435			M			M	M		M		M
	PHT-420			M			M	M		M		M
	PHT-436			M			M	M		M		M
	PHT-419	M			M							
	PHT-441			M			M	M		M		M
	PHT-454	M			M		M	M		M		M
	PHT-437			M			M	M		M		M
	PHT-443			M			M	M		M		M
	PHT-442			M			M	M		M		M
	PHT-445		M			M		M	M		M	
	PHT-456			M			M			M		
	PHT-438			M			M	M		M		M
	PHT-457			M			M			M		M
	UR-6								M		M	

Bachelor of Physical Therapy Program Outcomes:

Code	Learning Outcomes
Knowledge	
K1	The student will acquire a comprehensive and well-founded knowledge in the field of Physical therapy.
K2	The student will relate appropriate theories, concepts and principles from a range of relevant disciplines to determine the nature and extent of the patient's need for intervention.
K3	The student will recognize the contemporary issues, available scientific evidence, and their impact on current physical therapy practice in order to improve quality of care.
Skills	
S1	The student will develop the process of critical thinking and scholarly inquiry to support clinical reasoning, and evidence-based practice.
S2	The student will integrate the results of patient examination with available scientific evidence for an appropriate physical therapy diagnosis, prognosis and plan of care.
S3	The student will evaluate the effectiveness of interventions to formulate novel, safe and effective Physical therapy management while adapting to the needs and responses of the patient.
S4	The student will demonstrate the manual dexterity skills, to perform elements of examination, evaluation, diagnosis, prognosis, and intervention in a timely manner.
Competence	
C1	The student will consistently demonstrate to expand their knowledge and skills to maintain professional competence, and exercise leadership and innovation for proactive collaboration with others.
C2	The student will practice in an ethical manner, fulfilling an obligation to demonstrate moral responsibility and social justice that are consistent with the needs of the patient and society
C3	The students will develop the capacity to think, write and speak effectively and demonstrate respectful, positive and culturally appropriate behavior while communicating with others.
C4	The student will display the ability to use media and technology and utilize numerical methods to assess the suitability, accuracy and reliability of information from research and reference sources.

ANNEXURE C4

MUP13- PROGRAM & COURSE LEARNING

OUTCOME ALIGNMENT IPM-MATRIX

College: Applied Medical Sciences **Department:** Physical therapy & Health Rehabilitation

Program: Bachelor of Physical Therapy

Program Outcomes to Course Learning Outcome Matrix (X Matrix)

Code
MUP12

Student Learning Outcomes												
Learning Domain		Knowledge			Skills				Competence			
		K.1	K.2	K.3	S.1	S.2	S.3	S.4	C.1	C.2	C.3	C.4
<i>courses</i>	PENG-111											
	PMTH-112											
	PCOM-113											
	PSSC-114											
	PENG-121											
	PENG-122											
	PCHM-124											
	PPHS-125											
	PBIO-126-											
	PHT-211	X			X			X				
	PHT-214	X			X			X				
	PHT-212	X			X			X				
	CAMS-231											
	PHT-221		X			X		X	X		X	
	UR1											
	UR2											
	CAMS-232											
	PHT-223		X			X		X	X		X	

College: Applied Medical Sciences **Department:** Physical therapy & Health Rehabilitation

Program: Bachelor of Physical Therapy

Program Outcomes to Course Learning Outcome Matrix (X Matrix)

Code
MUP12

Student Learning Outcomes												
Learning Domain		Knowledge			Skills				Competence			
		K.1	K.2	K.3	S.1	S.2	S.3	S.4	C.1	C.2	C.3	C.4
<i>courses</i>	PHT-213	X			X			X				
	PHT-222		X			X		X	X		X	
	PHT-218	X			X							
	PHT-226		X			X		X	X		X	
	PHT-224		X			X		X	X		X	
	UR3											
	PHT-325		X			X		X	X		X	
	PHT-331			X			X	X		X		X
	PHT-315	X			X			X				
	PHT-327		X			X		X	X		X	
	PHT-328		X			X		X	X		X	
	PHT-329		X			X		X	X		X	
	CAMS-233											
	UR4											
	PHT-361			X			X			X		X
	PHT-332			X			X	X		X		X
	PHT-316	X			X			X				
	PHT-319	X			X							

College: Applied Medical Sciences **Department:** Physical therapy & Health Rehabilitation
Program: Bachelor of Physical Therapy

Program Outcomes to Course Learning Outcome Matrix (X Matrix)

Code
MUP12

[illegible]

Bachelor of Physical Therapy Program Outcomes:

Code	Learning Outcomes
Knowledge	
K1	The student will acquire a comprehensive and well-founded knowledge in the field of Physical therapy.
K2	The student will relate appropriate theories, concepts and principles from a range of relevant disciplines to determine the nature and extent of the patient's need for intervention.
K3	The student will recognize the contemporary issues, available scientific evidence, and their impact on current physical therapy practice in order to improve quality of care.
Skills	
S1	The student will develop the process of critical thinking and scholarly inquiry to support clinical reasoning, and evidence-based practice.
S2	The student will integrate the results of patient examination with available scientific evidence for an appropriate physical therapy diagnosis, prognosis and plan of care.
S3	The student will evaluate the effectiveness of interventions to formulate novel, safe and effective Physical therapy management while adapting to the needs and responses of the patient.
S4	The student will demonstrate the manual dexterity skills, to perform elements of examination, evaluation, diagnosis, prognosis, and intervention in a timely manner.
Competence	
C1	The student will consistently demonstrate to expand their knowledge and skills to maintain professional competence, and exercise leadership and innovation for proactive collaboration with others.
C2	The student will practice in an ethical manner, fulfilling an obligation to demonstrate moral responsibility and social justice that are consistent with the needs of the patient and society
C3	The students will develop the capacity to think, write and speak effectively and demonstrate respectful, positive and culturally appropriate behavior while communicating with others.
C4	The student will display the ability to use media and technology and utilize numerical methods to assess the suitability, accuracy and reliability of information from research and reference sources.

ANNEXURE C6.2

MUP15-PROGRAM OUTCOME

EVALUATION PLAN

College: Applied Medical Sciences **Department:** Physical therapy & Health Rehabilitation

Program: Physical Therapy

Student Learning Outcomes Measuring Schedule

Code
MUP15

		1 st Year 2014-2015		2 nd Year 2015-2016		3 rd Year 2016-2017		4 th Year 2017-2018	
		S1	S2	S1	S2	S1	S2	S1	S2
courses	111-PENG								
	112-PMTH								
	124-PCHM								
	125-PPHS								
	126-PBIO								
	PHT-211								
	PHT-214								
	PHT-221								
	PHT-223								
	PHT-213								
	PHT-325								
	PHT-315								
	PHT-327								
	PHT-361								
	PHT-333								
	PHT-435								
	PHT-420								
	PHT-436								
	PHT-419								
	PHT-441								

		1 st year		2 nd year		3 rd year		4 th year	
		S1	S2	S1	S2	S1	S2	S1	S2
courses	PHT-454								
	PHT-437								
	PHT-443								
	PHT-442								
	PHT-456								

(S1) First Semester

(S2) Second Semester

ANNEXURE I1

**UNIVERSITY APPROVAL OF THE PHYSICAL
THERAPY CURRICULUM AND PROGRAM
SPECIFICATION.**

"قرار إداري"

إن مدير جامعة المجمعة.

بناءً على الصلاحيات المخولة له بموجب النظام.

وبناءً على نظام مجلس التعليم العالي والجامعات الصادر بالمرسوم الملكي الكريم رقم (م/٨) وتاريخ ١٤١٤/٦/٤هـ.

وبعد الاطلاع على خطاب سعادة الأمين العام لمجلس التعليم العالي رقم (٦٥٠) وتاريخ ١٤٣٥/٤/٢هـ والمشار فيها إلى اعتماد معالي وزير التعليم العالي رئيس مجلس الجامعة لمحضر مجلس الجامعة في جلسته (السادسة) المعقودة بتاريخ ١٤٣٥/٣/٧هـ.

يقرر ما يلي :

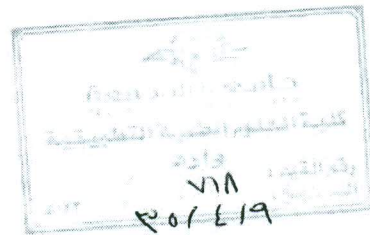
أولاً: اعتماد الموافقة على الخطة الدراسية لبرنامج تكنولوجيا الأجهزة الطبية بكلية العلوم الطبية التطبيقية ، حسب الصيغة المرفقة بهذا القرار.
ثانياً: على وكيل الجامعة للشؤون التعليمية استكمال الإجراءات اللازمة حيال ذلك في ضوء الأنظمة واللوائح.

ثالثاً: يبلغ هذا القرار لمن يلزم لاعتماده وتنفيذه.

والله الموفق.

مدير جامعة المجمعة

د . خالد بن سعد المقرن



الساح

المرققات:-----

التاريخ: ١٤٣٥ / ٦ / ٦هـ

الرقم: ٢٧ / ٣ / ج

"قرار إداري"

إن مدير جامعة المجمعة.

بناءً على الصلاحيات المخولة له بموجب النظام.


وبناءً على نظام مجلس التعليم العالي والجامعات الصادر بالمرسوم الملكي الكريم رقم (م/٨) وتاريخ ١٤١٤/٦/٤هـ.

إشارة إلى خطاب سعادة الأمين العام لمجلس التعليم العالي رقم (١٦٣٥) وتاريخ ١٤٣٥/٩/٤هـ والمشار فيها إلى اعتماد معالي وزير التعليم العالي رئيس مجلس الجامعة لمحضر مجلس الجامعة في جلسته (العاشر) المعقودة بتاريخ ١٤٣٥/٧/٢٢هـ.

يقرر ما يلي :

أولاً: اعتماد الموافقة على الخطة الدراسية لبرنامج البكالوريوس في العلاج الطبيعي بكلية العلوم الطبية التطبيقية ، حسب الصيغة المرفقة بهذا القرار.
ثانياً: على وكيل الجامعة للشؤون التعليمية استكمال الإجراءات اللازمة حيال ذلك في ضوء الأنظمة واللوائح.
ثالثاً: يبلغ هذا القرار لمن يلزم لاعتماده وتنفيذه.

والله الموفق.

مدير جامعة المجمعة

د. خالد بن سعد المقرن

الرقم: ٢/م/٣٥ التاريخ: ١٧/٩/١٤٣٥هـ المرفقات: -----

المجمعة ١١٩٥٢ ص.ب ٦٦. هاتف : ٠٦٤٣١١٥٢٠ فاكس : ٠٦٤٣٢٢٧٨٥ البريد الإلكتروني : rector@mu.edu.sa
Majmaah 11952 P.O.Box 66. Tel : 0096664311520 Fax: 0096664322785 Email : rector@mu.edu.sa

"قرار إداري"

إن مدير جامعة المجمعة.

بناءً على الصلاحيات المخولة له بموجب النظام.

وبناءً على نظام مجلس التعليم العالي والجامعات الصادر بالمرسوم الملكي الكريم رقم (م/٨) وتاريخ ١٤١٤/٦/٤هـ.

وبعد الاطلاع على خطاب سعادة الأمين العام لمجلس التعليم العالي رقم (٦٥٠) وتاريخ ١٤٣٥/٤/٢هـ والمشار فيها إلى اعتماد معالي وزير التعليم العالي رئيس مجلس الجامعة لمحضر مجلس الجامعة في جلسته (السادسة) المعقودة بتاريخ ١٤٣٥/٣/٧هـ.

يقرر ما يلي :

أولاً: اعتماد الموافقة على الخطة الدراسية لبرنامج التمريض بكلية العلوم الطبية التطبيقية ، حسب الصيغة المرفقة بهذا القرار.

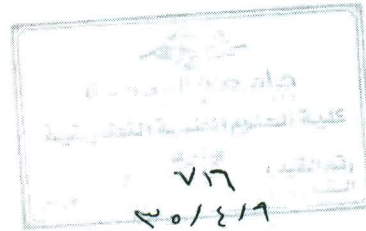
ثانياً: على وكيل الجامعة للشؤون التعليمية استكمال الإجراءات اللازمة حيال ذلك في ضوء الأنظمة واللوائح.

ثالثاً: يبلغ هذا القرار لمن يلزم لاعتماده وتنفيذه.

والله الموفق.

مدير جامعة المجمعة

د . خالد بن سعد المقرن



الساح

المرفقات: -----

التاريخ: ١٤٣٥/٤/٦هـ

الرقم: ج/م/٢٦

ANNEXURE I2

ACCEPTANCE OF MODIFIED PROGRAM

SPECIFICATION.

الرقم : 47302 / 39 / 1 / م
التاريخ : 1440/02/26

سعادة رئيس قسم العلاج الطبيعي والتأهيل الصحي بكلية العلوم الطبية التطبيقية سلمه الله

السلام عليكم ورحمة الله وبركاته وبعد :

إشارة إلى ما تضمنته الموضوعات والتوصيات الواردة في محضر الاجتماع للجلسة 6 بتاريخ 1440/02/23 فإننا نفيدكم باعتمادنا للمحضر وموافقنا على ما تضمنه من توصيات مع ملاحظة ما تضمنه التوجيه الوارد في الفقرة (سادساً) في المحضر المرفق. نأمل الاطلاع وإتمام ما يلزم وفق الأنظمة واللوائح.

وفقكم الله وسددكم ، والسلام عليكم ورحمة الله وبركاته

عميد الكلية

6	الجلسة	قسم العلاج الطبيعي والتأهيل الصحي بكلية العلوم الطبية التطبيقية	اللجنة
12:00	الوقت	1440/02/23	التاريخ

أولاً : أعضاء اللجنة حسب قرار تكوينها :

العضو	الصفة	حالة الحضور	اسباب الغياب
د.مازن مشبب القحطاني	رئيساً	حاضر	
د.محمد قطب صيام	أميناً	حاضر	
د. إنتصار سالم واكد	عضواً	حاضر	
د. عبدالرحيم شيخ قادر محمي الدين	عضواً	حاضر	
د. فضيل أحمد عبدالودود	عضواً	حاضر	
د. مساعد محمد الزهراني	عضواً	حاضر	
د. ولاء سيد محمد	عضواً	حاضر	
د.احمد ضحوي العنزي	عضواً	حاضر	
د.احمد منصور المنصور	عضواً	حاضر	
د.اسماء علي العنزي	عضواً	حاضر	
د.اناندي فاييري كاربانا غوندير	عضواً	حاضر	
د.دانه محمد اليحيى	عضواً	حاضر	
د.شادي بن عبدالله الشويعر	عضواً	حاضر	
د.عبدالعزیز عبدالله الكثيري	عضواً	حاضر	
د.غادة محمد شوقي	عضواً	حاضر	
د.محمد شريف سراج الدين	عضواً	حاضر	
د.محمد عاطف جيلاني	عضواً	حاضر	

ثانياً : جدول أعمال اللجنة :

الموضوع	مصدره	Subject Title	Subject Source
الطلب المقدم من المعيد بالقسم يوسف صالح اليوسف للترقية لوظيفة محاضر لحصوله على درجة الماجستير في العلاج الطبيعي من جامعة كونكورديا ويسكنسون بالولايات المتحدة الأمريكية	لجنة شؤون اعضاء هيئة التدريس		
الموافقة على توصيف المقررات الدراسية للعام الأكاديمي 1439- 1440 هـ	لجنة الجودة		
الموافقة على توصيف برنامج العلاج الطبيعي والتأهيل الصحي للعام الأكاديمي 1439- 1440 هـ	لجنة الجودة		
الموافقة على تقرير برنامج العلاج الطبيعي والتأهيل الصحي للعام الأكاديمي 1438- 1439 هـ	لجنة الجودة		
ما يستجد من اعمال اخري	رئيس القسم		

ثالثاً : المناقشات والتوصيات :

الموضوع : 1	الطلب المقدم من المعيد بالقسم يوسف صالح اليوسف للترقية لوظيفة محاضر لحصوله على درجة الماجستير في العلاج الطبيعي من جامعة كونكورديا ويسكنسون بالولايات المتحدة الأمريكية.
-------------	--

Subject Title	
ملخص وصف الموضوع ومناقشة	اطلع مجلس القسم علي الطلب المقدم من المعيد بالقسم يوسف صالح اليوسف رقم هوية وطنية 1072585878 ورقم وظيفي رقم 100804 للترقية لوظيفة محاضر بقسم العلاج الطبيعي والتأهيل الصحي لحصوله على درجة الماجستير في العلاج الطبيعي من جامعة كونكورديا ويسكنسون بالولايات المتحدة الأمريكية في تخصص التأهيل الطبي للعظام والعضلات والمفاصل بتقدير ممتاز وبمعدل 3.75 من 4 بتاريخ 15/7/2016 م .
Subject Description	
التوصية	وافق مجلس القسم على اقتراح ترقية المعيد بالقسم يوسف صالح اليوسف الي محاضر بقسم العلاج الطبيعي والتأهيل الصحي.
Recommendation	
مستند التوصية	صلاحيات المجلس "المادة الثالثة والاربعون من نظام مجالس التعليم العالي ويقترح تعيين أعضاء هيئة التدريس والمحاضرين والمعيدين وترقياتهم"
Recommendation document	
الجهات ذات العلاقة	وكالة الكلية للدراسات العليا والبحث العلمي.
The RelevantJurisdiction	
الموضوع : 2	الموافقة على توصيف المقررات الدراسية للعام الأكاديمي 1439 - 1440 هـ.
Subject Title	
ملخص وصف الموضوع ومناقشة	أطلع مجلس القسم وناقش التقرير المقدم من لجنة الجودة بالقسم عن توصيف المقررات الدراسية للعام الأكاديمي 1439 - 1440 هـ.
Subject Description	
التوصية	وافق مجلس القسم على توصيف المقررات الدراسية للعام الأكاديمي 1439 - 1440 هـ.
Recommendation	
مستند التوصية	صلاحيات المجلس "المادة الثالثة والاربعون من نظام مجالس التعليم العالي والتي تجيز لمجلس القسم تنظيم اعمال القسم وتنسيقها".
Recommendation document	
الجهات ذات العلاقة	وكالة الكلية للتطوير والجودة.
The RelevantJurisdiction	
الموضوع : 3	الموافقة على توصيف برنامج العلاج الطبيعي والتأهيل الصحي للعام الأكاديمي 1439 - 1440 هـ.
Subject Title	
ملخص وصف الموضوع ومناقشة	أطلع مجلس القسم وناقش التقرير المقدم من لجنة الجودة بالقسم عن توصيف برنامج العلاج الطبيعي والتأهيل الصحي للعام الأكاديمي 1439 - 1440 هـ .
Subject Description	
التوصية	وافق مجلس القسم على توصيف برنامج العلاج الطبيعي والتأهيل الصحي للعام الأكاديمي 1439 - 1440 هـ.
Recommendation	

مستند التوصية	صلاحيات المجلس "المادة الثالثة والاربعون من نظام مجالس التعليم العالي والتي تجيز لمجلس القسم تنظيم اعمال القسم وتنسيقها"
Recommendation document	
الجهات ذات العلاقة	وكالة الكلية للتطوير والجودة
The RelevantJurisdiction	
الموضوع : 4	الموافقة على تقرير برنامج العلاج الطبيعي والتأهيل الصحي للعام الأكاديمي 1438- 1439 هـ.
Subject Title	
ملخص وصف الموضوع ومناقشة	أطلع مجلس القسم وناقش التقرير المقدم من لجنة الجودة بالقسم عن تقرير برنامج العلاج الطبيعي والتأهيل الصحي للعام الأكاديمي 1438- 1439 هـ.
Subject Description	
التوصية	وافق مجلس القسم على تقرير برنامج العلاج الطبيعي والتأهيل الصحي للعام الأكاديمي 1438- 1439 هـ.
Recommendation	
مستند التوصية	صلاحيات المجلس "المادة الثالثة والاربعون من نظام مجالس التعليم العالي والتي تجيز لمجلس القسم تنظيم اعمال القسم وتنسيقها"
Recommendation document	
الجهات ذات العلاقة	وكالة الكلية للتطوير والجودة.
The RelevantJurisdiction	
الموضوع : 5	ما يستجد من اعمال اخري
Subject Title	
ملخص وصف الموضوع ومناقشة	
Subject Description	
التوصية	
Recommendation	
مستند التوصية	
Recommendation document	
الجهات ذات العلاقة	
The RelevantJurisdiction	

الرفع لصاحب الصلاحية

رابعاً : يوصى برفع هذا المحضر إلى :

خامساً : رأي الأعضاء في المحضر :

العضو	رأي العضو	أسباب التحفظ
د. فضيل أحمد عبدالودود	موافق	
د. ولاء سيد محمد	موافق	
د. مساعد محمد الزهراني	موافق	

د. محمد شريف سراج الدين	موافق	
د. عبدالرحيم شيخ قادر محمي الدين	موافق	
د. محمد قطب صيام	موافق	
د. محمد عاطف جيلاني	موافق	
د. مازن مشيب القحطاني	موافق	
د. شادي بن عبدالله الشويعر	موافق	
د. عبدالعزيز عبدالله الكثيري	موافق	
د. احمد ضحوي العنزي	موافق	
د. اناندي فاييري كاربانا غوندير	موافق	
د. غادة محمد شوقي	موافق	
د. احمد منصور المنصور	موافق	
د. دانه محمد اليحيى	موافق	
د. اسماء علي العنزي	موافق	

رأي المدعوين في المحضر :

المدعو	رأي المدعو	أسباب التحفظ
--------	------------	--------------

سادساً : توجيه صاحب الصلاحية :

ANNEXURE I3

**ACCEPTANCE OF MODIFIED ALIGNMENT OF
PROGRAM OUTCOMES AS PER SAQF
DOMAINS OF LEARNING**

الرقم : 51353 / 40 / 1 / م
التاريخ : 1441/02/19

سعادة رئيس قسم العلاج الطبيعي والتأهيل الصحي بكلية العلوم الطبية التطبيقية سلمه الله

السلام عليكم ورحمة الله وبركاته وبعد :

إشارة إلى ما تضمنته الموضوعات والتوصيات الواردة في محضر الاجتماع للجلسة 5 بتاريخ 1441/02/01 فإننا نفيدكم باعتمادنا للمحضر وموافقنا على ما تضمنه من توصيات مع ملاحظة ما تضمنه التوجيه الوارد في الفقرة (سادساً) في المحضر المرفق. نأمل الاطلاع وإتمام ما يلزم وفق الأنظمة واللوائح.

وفقكم الله وسددكم ، والسلام عليكم ورحمة الله وبركاته

عميد الكلية

5	الجلسة	قسم العلاج الطبيعي والتأهيل الصحي بكلية العلوم الطبية التطبيقية	اللجنة
11:00	الوقت	1441/02/01	التاريخ

أولاً : أعضاء اللجنة حسب قرار تكوينها :

العضو	الصفة	حالة الحضور	اسباب الغياب
د.مازن مشبب القحطاني	رئيساً	حاضر	
د.محمد قطب صيام	أميناً	حاضر	
د. عبدالرحيم شيخ قادر محمي الدين	عضواً	حاضر	
د. فضيل أحمد عبدالودود	عضواً	حاضر	
د. مساعد محمد الزهراني	عضواً	حاضر	
د. ولاء سيد محمد	عضواً	حاضر	
د.احمد ضحوي العنزي	عضواً	حاضر	
د.احمد منصور المنصور	عضواً	حاضر	
د.اسماء علي العنزي	عضواً	حاضر	
د.اناندي فاييري كارباتا غوندير	عضواً	حاضر	
د.دانه محمد اليحيى	عضواً	حاضر	
د.شادي بن عبدالله الشويعر	عضواً	حاضر	
د.عبدالعزیز عبدالله الكثيري	عضواً	حاضر	
د.غادة محمد شوقي	عضواً	حاضر	
د.محمد شريف سراج الدين	عضواً	حاضر	
د.محمد عاطف جيلاني	عضواً	حاضر	

ثانياً : جدول أعمال اللجنة :

الموضوع	مصدره	Subject Title	Subject Source
استعراض ومناقشة تقرير عن نتائج كل المقدمة عن (all surveys) الاستبيانات برنامج بكالوريوس العلاج الطبيعي والتأهيل الصحي	لجنة الجودة و الاعتماد الاكاديمي		
استعراض ومناقشة الطلب المقدم من الدكتور عبد العزيز بن عبد الله الكثيري للرفع ببدل تميز عن النشر العلمي	امين المجلس		
استعراض ومناقشة قائمة منسقي المقررات الدراسية للفصل الدراسي الأول (441) للعام الأكاديمي 1441هـ	لجنة الشؤون الأكاديمية		
استعراض ومناقشة توصيات تطوير المقررات الدراسية المقترحة في تقارير المقررات للعام الأكاديمي 1439-1440هـ	لجنة الجودة		

		لجنة الجودة	استعراض ومناقشة توافق اهداف ومخرجات برنامج بكالوريوس العلاج الطبيعي والتأهيل الصحي (Learning domains & Learning outcomes of Physical therapy program) مع الإطار السعودي (Consistency with Saudi Arabian Qualifications Framework)
		رئيس القسم	ما يستجد من اعمال اخري

ثالثاً : المناقشات والتوصيات :

الموضوع : 1	استعراض ومناقشة تقرير عن نتائج كل الاستبانات (all surveys) المقدمة عن برنامج بكالوريوس العلاج الطبيعي والتأهيل الصحي.
Subject Title	ملخص وصف الموضوع ومناقشة
Subject Description	استعرض مجلس قسم العلاج الطبيعي والتأهيل الصحي نتائج وتوصيات الاستبانات المقدمة عن برنامج بكالوريوس العلاج الطبيعي والتأهيل الصحي وتضمن التقرير علي عدد من الاستبانات وهي :- 1- استبانة خبرة الطلاب 2، (student experience survey)- استبانة خبرة البرنامج (program experience survey)- استبانة الارشاد الاكاديمي 4، (academic advisory survey)- استبانة تقييم مخرجات البرنامج 5، (program outcome evaluation survey)- استبانة الخريجين 6، (aluminum ev survey)- استبانة تقييم متدربي الامتياز (internship evaluation survey)- استبانة 7، (survey)- استبانة رضا أعضاء هيئة التدريس 8، (faculty satisfaction survey)- استبانة كفاءة الخريجين 9، (graduate attribute/ competencies survey)- استبانة 10، (course evaluation survey)- استبانة الرؤية والرسالة (vision mission survey) المقرر 11، - استبانة أماكن تشغيل الخريجين (stakeholders graduate survey).
التوصية	اطلع مجلس قسم العلاج الطبيعي والتأهيل الصحي على التقرير المقدم من لجنة الجودة بالقسم عن نتائج كل الاستبانات (all surveys) المقدمة عن برنامج بكالوريوس العلاج الطبيعي والتأهيل الصحي، واوصي بالموافقة على التقرير ورفع التقرير الي وكالة الكلية للتطوير والجودة.
Recommendation	مستند التوصية
Recommendation document	صلاحيات المجلس "المادة الثالثة والاربعون من نظام مجالس التعليم العالي والتي تجيز لمجلس القسم تنظيم اعمال القسم وتنسيقها"
الجهات ذات العلاقة	وكالة الكلية للتطوير والجودة مجلس الكلية
The RelevantJurisdiction	
الموضوع : 2	استعراض ومناقشة الطلب المقدم من الدكتور عبد العزيز بن عبد الله الكثيري للرفع ببذل تميز عن النشر العلمي.
Subject Title	ملخص وصف الموضوع ومناقشة
	استعرض مجلس القسم الطلب المقدم من الدكتور عبد العزيز بن عبد الله الكثيري للحصول علي بدل تميز عن النشر العلمي لبحثه المنشور في مجلة (Sports Health – A Multidisciplinary approach) وهي من المجلات المصنفة (ISI) من الفئة (أ) وذات معامل تأثير (Impact Factor) مقدر ب (2.694) و عنوان البحث هو (Vestibulo-Ocular Reflex Function in Adolescents) (With Sport–Related in concussion: preliminary results) لعام 2019 وقد وافق المجلس علي طلبه.

Subject Description	
التوصية	أوصي مجلس القسم بالموافقة على الرفع ببدل التميز (النشر العلمي) للدكتور عبد العزيز بن عبد الله الكثيري
Recommendation	
مستند التوصية	اللائحة المنظمة لشئون منسوبي الجامعات السعودية من أعضاء هيئة التدريس ومن في حكمهم. صلاحيات المجلس "المادة الثالثة والأربعون من نظام مجالس التعليم العالي والتي تجيز لمجلس القسم تنظيم أعمال القسم وتنسيقها"
Recommendation document	
الجهات ذات العلاقة	وكالة الكلية للدراسات العليا والبحث العلمي. مجلس الكلية
The RelevantJurisdiction	
الموضوع : 3	استعراض ومناقشة قائمة منسقي المقررات الدراسية للفصل الدراسي الأول (441) للعام الأكاديمي 1441هـ.
Subject Title	
ملخص وصف الموضوع ومناقشة	استعرض مجلس القسم قائمة منسقي المقررات الدراسية للفصل الدراسي الأول (441) للعام الأكاديمي 1441هـ، وناقش واجبات ومهام منسق المقرر في توحيد طرق التقويم والاختبارات بين كل الشعب للمقرر، ومراعاة عدم التعديل في المراجع او محتوى واهداف المقرر الا بعد موافقة لجنة الشؤون الأكاديمية ومجلس القسم.
Subject Description	
التوصية	وافق مجلس القسم على توزيع منسقي المقررات الدراسية للفصل الدراسي الأول (441) للعام الأكاديمي 1441هـ.
Recommendation	
مستند التوصية	صلاحيات المجلس "المادة الثالثة والأربعون من نظام مجالس التعليم العالي والتي تجيز لمجلس القسم تنظيم أعمال القسم وتنسيقها"
Recommendation document	
الجهات ذات العلاقة	وكالة الكلية للشؤون التعليمية مجلس الكلية.
The RelevantJurisdiction	
الموضوع : 4	استعراض ومناقشة توصيات تطوير المقررات الدراسية المقترحة في تقارير المقررات للعام الأكاديمي 1440-1439هـ.
Subject Title	
ملخص وصف الموضوع ومناقشة	استعرض مجلس القسم التوصيات الخاصة بتطوير المقررات الدراسية الواردة في تقارير المقررات للعام الأكاديمي 1440-1439هـ عن طريق منسقي المقررات.
Subject Description	
التوصية	أوصي مجلس القسم بالموافقة التوصيات الخاصة بتطوير المقررات الدراسية الواردة في تقارير المقررات للعام الأكاديمي 1440-1439هـ.
Recommendation	

مستند التوصية	صلاحيات المجلس "المادة الثالثة والاربعون من نظام مجالس التعليم العالي والتي تجيز لمجلس القسم تنظيم اعمال القسم وتنسيقها"
Recommendation document	
الجهات ذات العلاقة	وكالة الكلية للتطوير والجودة
The RelevantJurisdiction	
الموضوع : 5	استعراض ومناقشة توافق اهداف ومخرجات برنامج بكالوريوس العلاج الطبيعي والتأهيل الصحي (Learning domains & Learning outcomes of Physical therapy program) مع الإطار السعودي للمؤهلات (Consistency with Saudi Arabian Qualifications Framework)
Subject Title	
ملخص وصف الموضوع ومناقشة	استعراض مجلس القسم استعراض ومناقشة توافق اهداف ومخرجات برنامج بكالوريوس العلاج الطبيعي والتأهيل الصحي (Learning domains & Learning outcomes of Physical therapy program) مع الإطار السعودي للمؤهلات (Consistency with Saudi Arabian Qualifications Framework)
Subject Description	
التوصية	وافق مجلس القسم على التقرير المقدم عن توافق اهداف ومخرجات برنامج بكالوريوس العلاج الطبيعي والتأهيل الصحي مع الإطار السعودي للمؤهلات (SAQF)
Recommendation	
مستند التوصية	صلاحيات المجلس "المادة الثالثة والاربعون من نظام مجالس التعليم العالي والتي تجيز لمجلس القسم تنظيم اعمال القسم وتنسيقها"
Recommendation document	
الجهات ذات العلاقة	وكالة الكلية للتطوير والجودة مجلس الكلية.
The RelevantJurisdiction	
الموضوع : 6	ما يستجد من اعمال اخري
Subject Title	
ملخص وصف الموضوع ومناقشة	
Subject Description	
التوصية	
Recommendation	
مستند التوصية	
Recommendation document	
الجهات ذات العلاقة	
The RelevantJurisdiction	

خامساً : رأي الأعضاء في المحضر :

العضو	رأي العضو	أسباب التحفظ
د. فضيل أحمد عبدالودود	موافق	
د. ولاء سيد محمد	موافق	
د. مساعد محمد الزهراني	موافق	
د. محمد شريف سراج الدين	موافق	
د. عبدالرحيم شيخ قادر محمي الدين	موافق	
د. محمد قطب صيام	موافق	
د. محمد عاطف جيلاني	موافق	
د. مازن مشيب القحطاني	موافق	
د. شادي بن عبدالله الشويعر	موافق	
د. عبدالعزيز عبدالله الكثيري	موافق	
د. احمد ضحوي العنزي	موافق	
د. اناندي فاييري كاربانا غوندير	موافق	
د. غادة محمد شوقي	موافق	
د. احمد منصور المنصور	موافق	
د. دانه محمد البحيي	موافق	
د. اسماء علي العنزي	موافق	

رأي المدعويين في المحضر :

المدعو	رأي المدعو	أسباب التحفظ
--------	------------	--------------

سادساً : توجيه صاحب الصلاحية :