

KINGDOM OF SAUDI ARABIA  
Ministry of Education  
Majmaah University  
College of science  
Department of Computer Science & Info.



المملكة العربية السعودية  
وزارة التعليم  
جامعة المجمعة  
كلية العلوم  
قسم علوم الحاسب والمعلومات

project 1  
ON

# Alumni System

**Prepared By:**

Bander Ali 341101543

**Submitted To:-**

Department of computer science and Information

Majmah University

**Supervisor: Dr. Yaser Abdalla**

1439/8/8

## **Index**

<b>ABSTRACT</b>	<b>4</b>
<b>RESEARCH PROBLEM</b>	<b>4</b>
<b>CHAPTER1</b>	<b>7</b>
<b>I.II.SUMMARY AND LITERATURE REVIEW OF PREVIOUS RESEARCH ON THIS SUBJECT</b>	<b>8</b>
<b>CHAPTER 2</b>	<b>9</b>
<b>CHAPTER 3</b>	<b>10</b>
<b>REFERENDUM</b>	<b>10</b>
<b>USE CASE DIAGRAMFORADMIN</b>	<b>12</b>
<b>USE CASE DIAGRAMFORSTUDENT</b>	<b>13</b>
<b>SEQUNS DIAGRAM FOR ADMIN</b>	<b>14</b>
<b>SEQUNS DIAGRAM FORSTUDENT</b>	<b>15</b>
<b>ACTIVITY DIAGRAM</b>	<b>16</b>
<b>CLASS DIAGRAM</b>	<b>17</b>
<b>ER DIAGRAM</b>	<b>19</b>
<b>LOGIN</b>	<b>20</b>
<b>SEARCH</b>	<b>21</b>
<b>CH4</b>	<b>22</b>
<b>CH5</b>	<b>22</b>
<b>CONCLUSION</b>	<b>23</b>
<b>REFERENCES</b>	<b>24</b>

## **Index of figures and tables**

Figure (2-1) USE CASE DIAGRAM FOR ADMIN .....	12
Figure (2-2) USE CASE DIAGRAM FOR STUDENT .....	13
Figure (2-3) SEQUNS DIAGRAM FOR ADMIN.....	14
Figure (2-4) SEQUNS DIAGRAM FOR .....	15
FIGURE (2-5) ACTIVITY DIAGRAM.....	16
Figure (2-6) CLASS DIAGRAM .....	17
Figure (2-7) ERD DIAGRAM .....	18
FIGURE (2-8) LOGIN PAGE .....	20
Figure (2-9) SERCHE PAGE .....	21

## **ABSTRACT**

The information system for communication with alumni embodies one of many ways how university can keep tracking with its graduates. Except for communication between university and its graduates, the information system should allow communication between graduates themselves and their personal presentation in public. The system also should collect actual information about working experience of graduates, which can improve faculty credits and teaching process. The presented information system includes all these points and focuses on usability and comfortable user interface.

The aim of this project is to build an Alumni of Majmaah university online dashboard, it is intended to manage especially the Alumni of college of science with their respective fields.

The project manage the fresh as well as old graduate students with their respective information in actively participating in making registering, searching, managing the alumni information for sharing their expertise, network, jobs opportunities and resources. This participation has evolved into multiple dimensions; and is now eager to formally enter into the domain of mentorship to students through a regular program. Alumni registration management system (Alumni Dashboard) is a step towards this, creating multidimensional interactions between current and past students of College of science at azzulfi.

## **RESEARCH PROBLEM**

Existing system is a manual one in which users are maintaining documents paper work to store the information like colleges details, student details. It is very difficult to maintain historical data.

It is difficult to maintain important information in documents paper work.

More manual hours need to generate required reports.

It is tedious to manage historical data which needs much space to keep all the previous years, ledgers, documents paper work.

## **SOLUTION**

The design and implementation of the ALUMNI Dashboard system will be available for general public use through the web interface. A non-registered visitor can look at the list of graduates according to year of graduation or a field of study. He can also look at graduates profiles. The level of profile details shown to the public is limited. By default, a public visitor can only see name and surname of a graduate, year of graduation and a field of study. The faculty endeavors to propagate its graduates. Therefore graduates can also add some information about themselves into the system during the study such as working experience, knowledge. Graduates can enable to display this information in their profiles for public visitors.

**Keyword:** Alumni, System, Student, Management, Dashboard

# **CHAPTER1**

## **I.I. INTRODUCTION**

The greatest asset any Institution can have is the Alumni system. Alumni are the people who represent the Institution in the real world.

Alumni website is created for the students that have graduated from the Institution. This is a web based application that allows former students to take advantage of the benefits and services that a Institution offers after graduation. The alumni network is becoming important in the development of the institution because of their vast potential that benefits both the Institution and the students. There are many benefits for being an alumni member of a college or Institution, some of these benefits are: keeping a person inform on the events that are organized by the Institution, and when some important events will be holding in the Institution. Another benefit is that information concerning a former student can easily be received and other members of the alumni community can be located without much stress. The student and alumni can communicate each other.

## **I.II.summary and literature review of previous research on this topic**

This project is aimed at developing a Repository and each Engine for alumni of the college, which is of importance to a college. The Alumni Information Database is a web based application that can be accessed throughout the World. Anyone can access the search Engine to know about any Alumni of that college .

This system can be used as an application for the Alumni Information

This project is aimed at developing a Repository and each Engine for alumni of the college, which is of importance to a college. The Alumni Information Database is a web based application that can be accessed throughout the World. Anyone can access the search Engine to know about any Alumni of that college but can't able to add.

This system can be used as an application for the Alumni Information

### **Chapters summary:**

**In chapter 2:** we introduce a literature review on the problem and how people solved it ( The problem of the search is extensively studied and summarized )

**In chapter 3:**Referendum of students about the project, and hence, an Explanation for the powers of administration with alumni and representation for the used UML'S with the system interfaces and database ERD

**In chapter 4 :** we expected that by applying and implementing the project on the web server, a great benefit for both the students and the college and university administrations.

**In chapter 5 :**Conclusion and future works are represented on chapter 5.

Finally a bibliographies and references used to create out the adopted project report.

# **CHAPTER 2**

## **The problem of the research in details**

The Department of Graduates Follow-up is responsible for monitoring the affairs of graduates.

It is proposed to be administratively linked to the Deanship of Student Affairs, where the administration mentors the transfer of students from the academic education environment to the operational environment. The Department also monitors the graduates and learns the news of the university's keenness to maintain a permanent and strong contact with the graduates.

Graduation is the end of the relationship with the university, and try to find jobs for university graduates.

One of the most important objectives of the establishment of the administration is to link the bridges of practical life with the academy and to support continuous communication between the university and its graduate, benefiting the university and its graduates, as well as conducting research studies on academic developments in order to meet the requirements of the labor market.

The research will solve a large part of unemployment if it is used from universities in the Kingdom of Saudi Arabia and also solve a large part of the referendums on the outputs of learning where the outputs will be true and real for each university or school using a system conducted by the rules of alumni

There are now more than one million unemployed, so the technology will be integrated into a database on a website so that information can be accessed in a flexible and easy way.

# CHAPTER 3

## REFERENDUM

1- هل تعتقد ان الفكرة مناسبة في ظل عدم توفر وظائف ؟						
				نسبة الإجابات	إجمالي الإجابات	
1	نعم			92.86%	13	
2	لا			7.14%	1	
تحليل	متوسط:	1.07	انحراف معياري:	0.26	معدل الرضا:	7.14
	اختلاف:	0.07	خطأ معياري:	0.07	تم الإجابة عليه	14
					تم تخطيه	0

2. هل تعتقد انه من الممكن توظيف عدد كبير من الخريجين بواسطة هذا المشروع؟						
				نسبة الإجابات	إجمالي الإجابات	
1	نعم			92.86%	13	
2	لا			7.14%	1	
تحليل	متوسط:	1.07	انحراف معياري:	0.26	معدل الرضا:	7.14
	اختلاف:	0.07	خطأ معياري:	0.07	تم الإجابة عليه	14
					تم تخطيه	0

3. بعد تخرجك سيكون لك حساب على الموقع هل ستدخل وتعديل بياناتك مثل اضافة شهادة وغيرها؟

					نسبة الإجابات	إجمالي الإجابات		
1	نعم		<div></div>		84.62%	11		
2	لا		<div></div>		15.38%	2		
تحليل	متوسط	1.15	انحراف معياري	0.36	معدل الرضا	15.38	تم الإجابة عليه	13
	اختلاف	0.13	خطأ معياري	0.1			تم تخطيه	1

4. هل تعتقد ان الفكرة قابله للتطوير وتكون على مستوى المملكه

					نسبة الإجابات	إجمالي الإجابات		
1	نعم		<div></div>		92.31%	12		
2	لا		<div></div>		7.69%	1		
تحليل	متوسط	1.08	انحراف معياري	0.27	معدل الرضا	7.69	تم الإجابة عليه	13
	اختلاف	0.07	خطأ معياري	0.07			تم تخطيه	1

5. هل لديك اقتراحات لباضافتها للمشروع ؟اذكرها.

				نسبة الإجابات	إجمالي الإجابات
1	سؤال مفتوح الإجابة			100.00%	1
1	27/03/18 4:41AM ID: 78198952	مشروعك لو بندر وشده يلكو طور ه.. بالتوفيق			
				تم الإجابة عليه	1
				تم تخطيه	13

**UML DIGRAM**  
**USE CASE DIAGRAMFOR**  
**ADMIN**

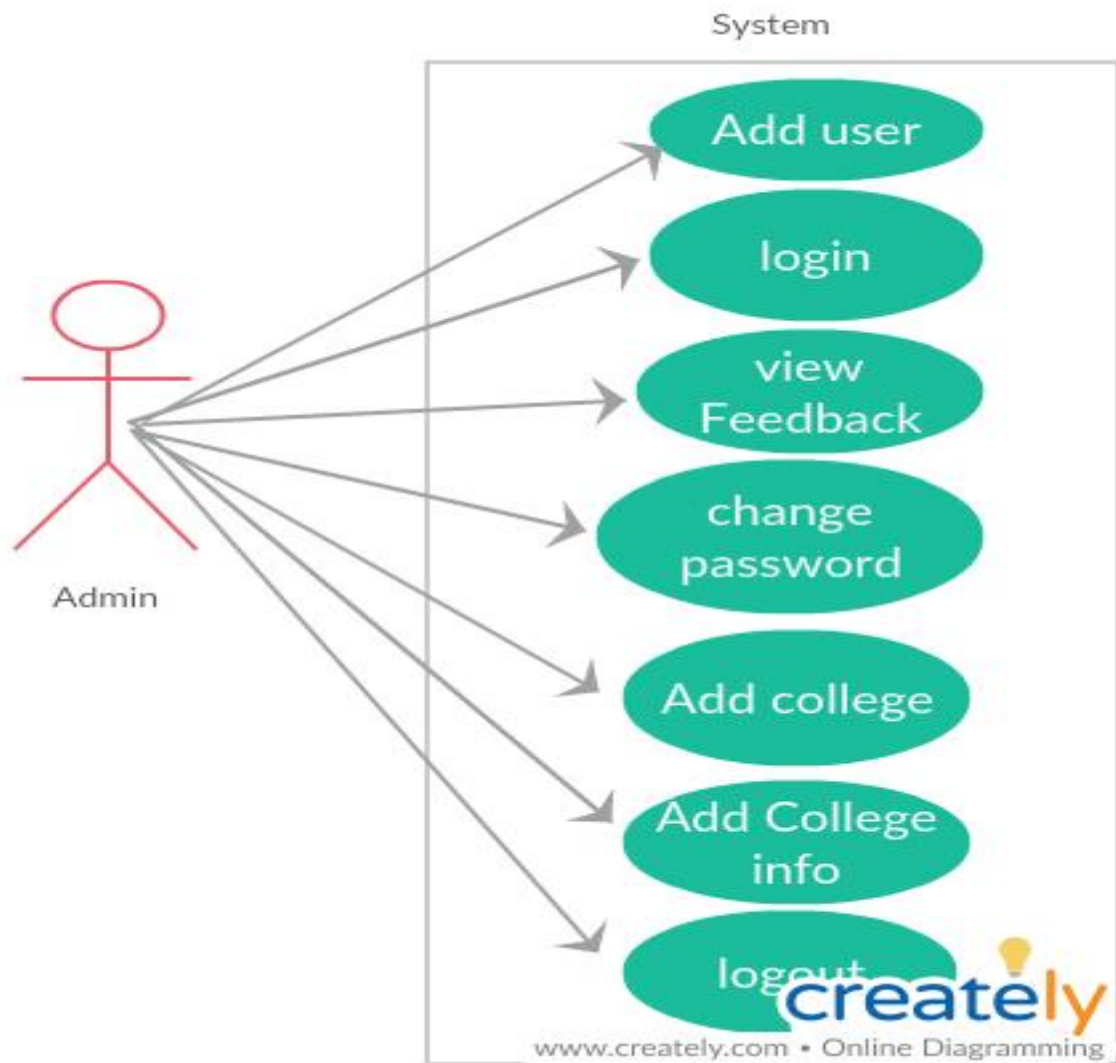


Figure (3-1) use-case diagram

**Supervisor has the following tasks**

- Add a new account
- login
- view Feedback
- Chang password
- Add college
- Add colleg Info
- logout

## USE CASE DIAGRAM FOR STUDENT

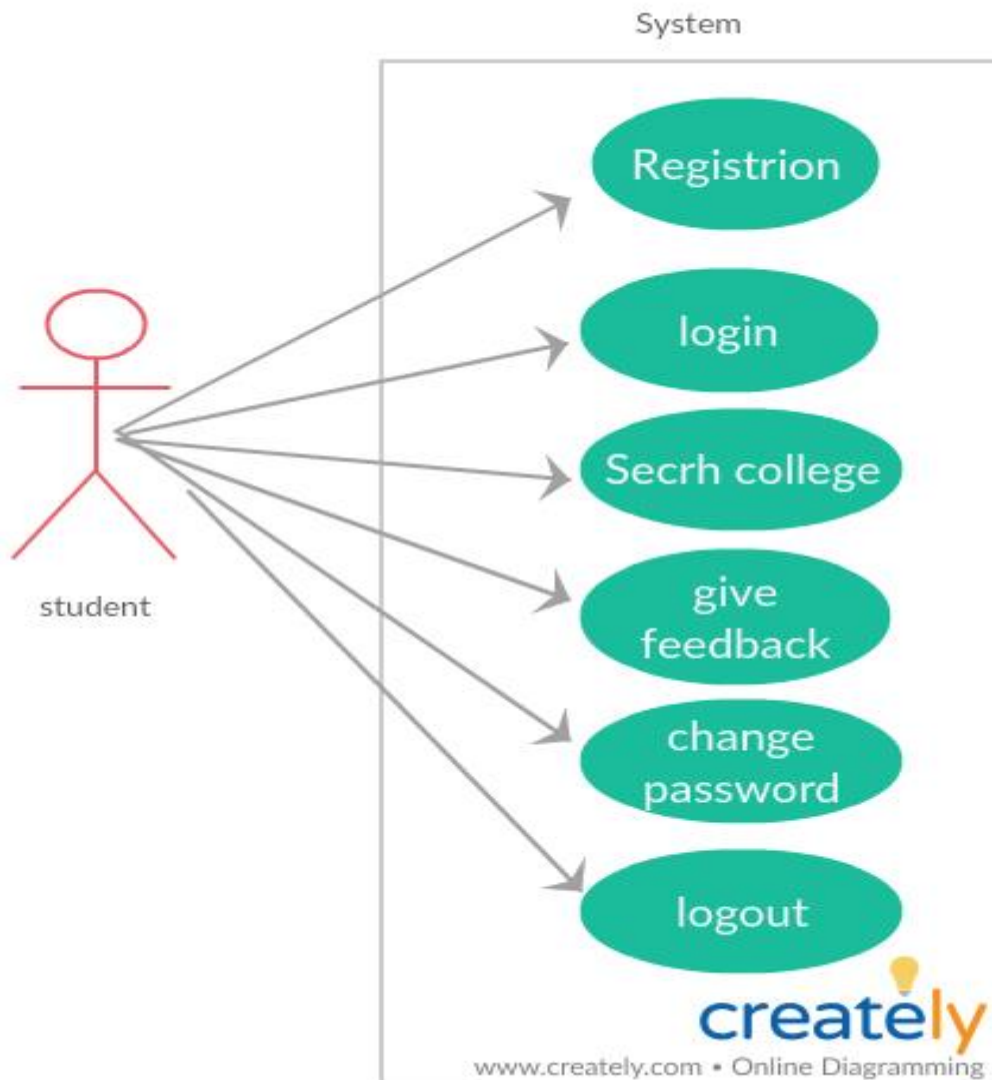


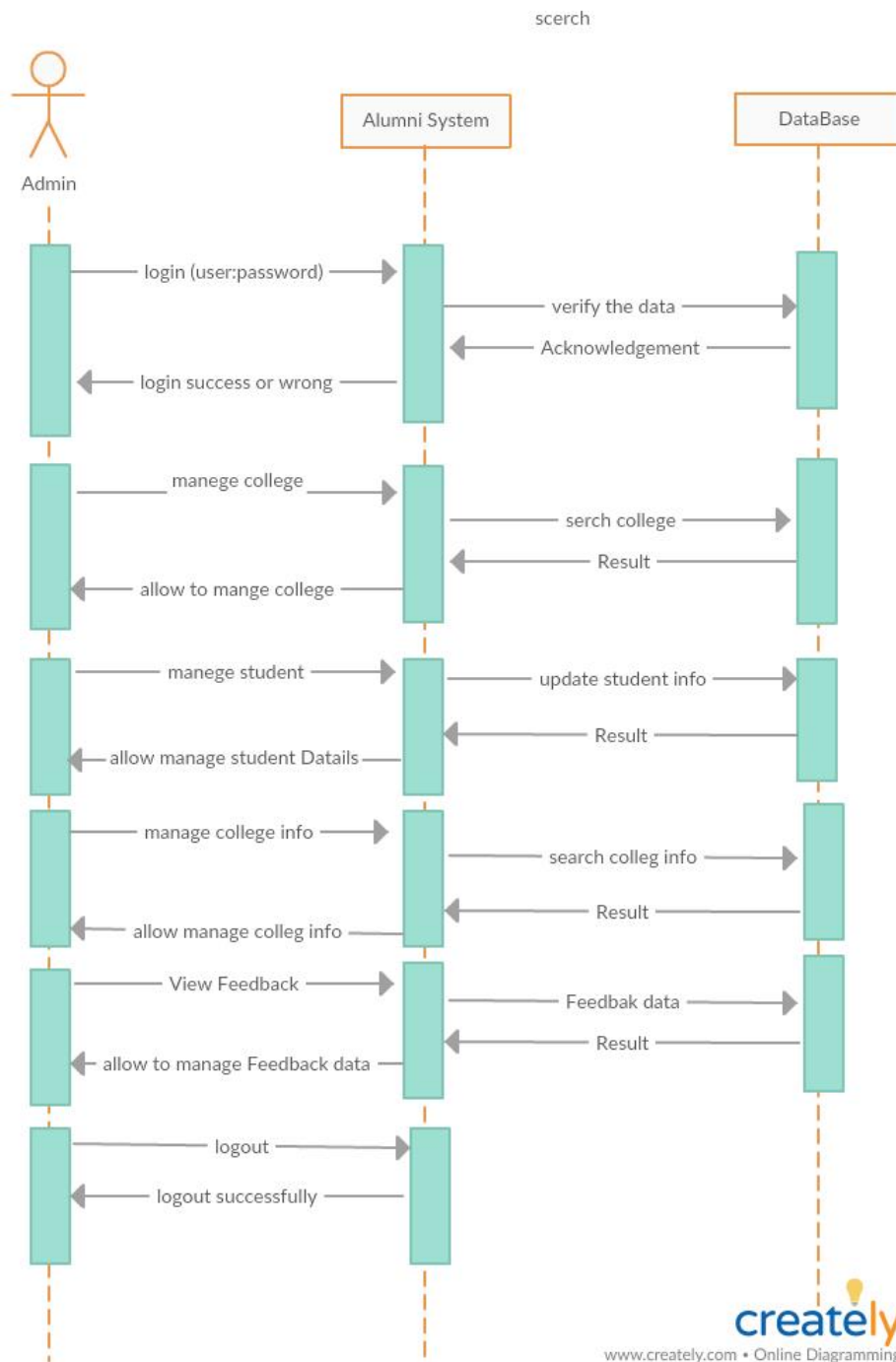
Figure (3-2) use case

### Student has powers

- login
- Registration
- Give Feedback
- Chang password
- Cearch college
- logout

## SEQUNS DIAGRAM FOR

### ADMIN



Figure(3-3) SEQUNS DIAGRAM

- The supervisor enters the name and password  
The information is validated

It enables them to manage the college and search within it for students' information  
And then show him the results

- Can edit and view student information
- Can edit and view college information
- View student Feedback

## SEQUNS DIAGRAM FOR

### STUDENT

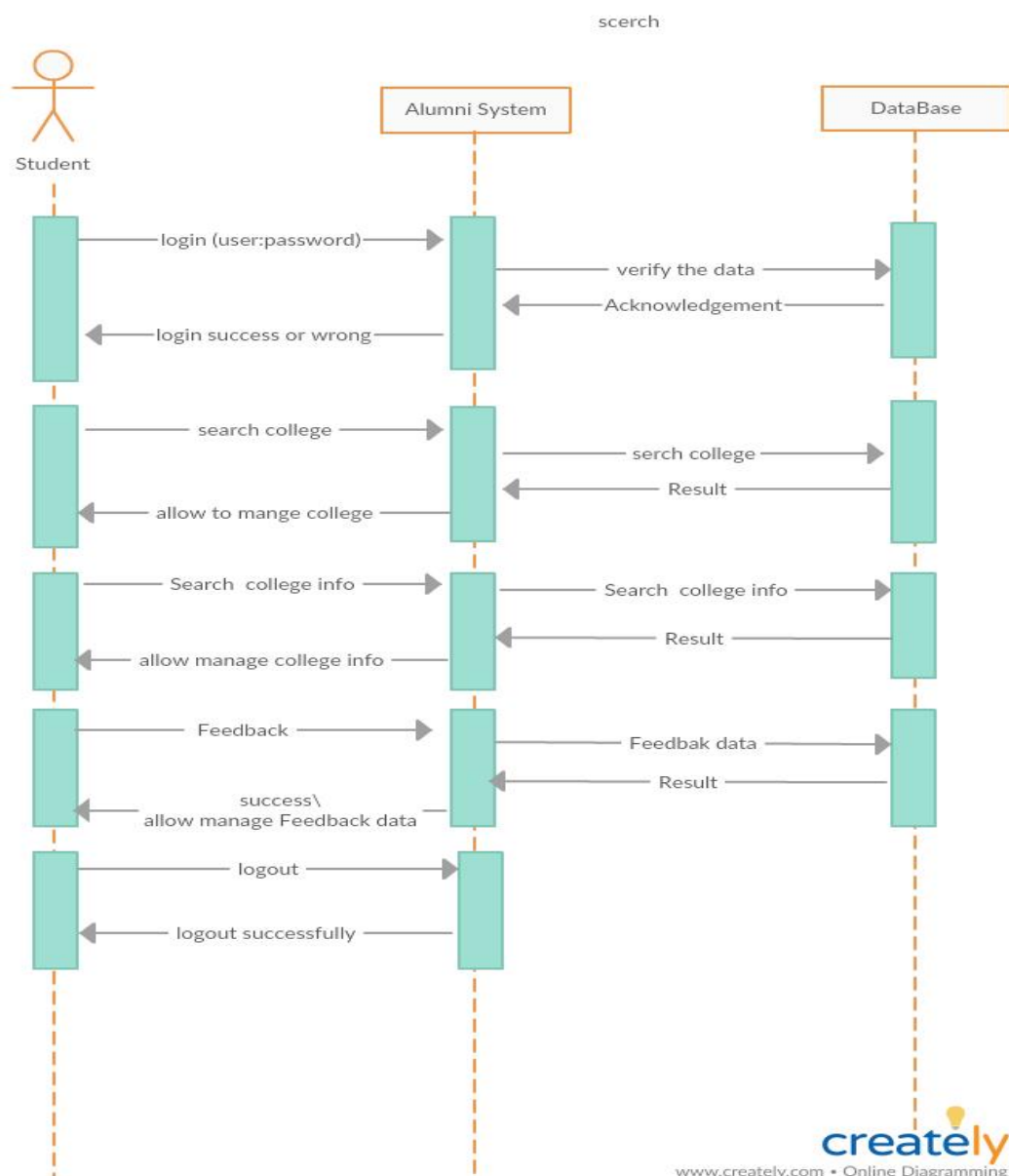
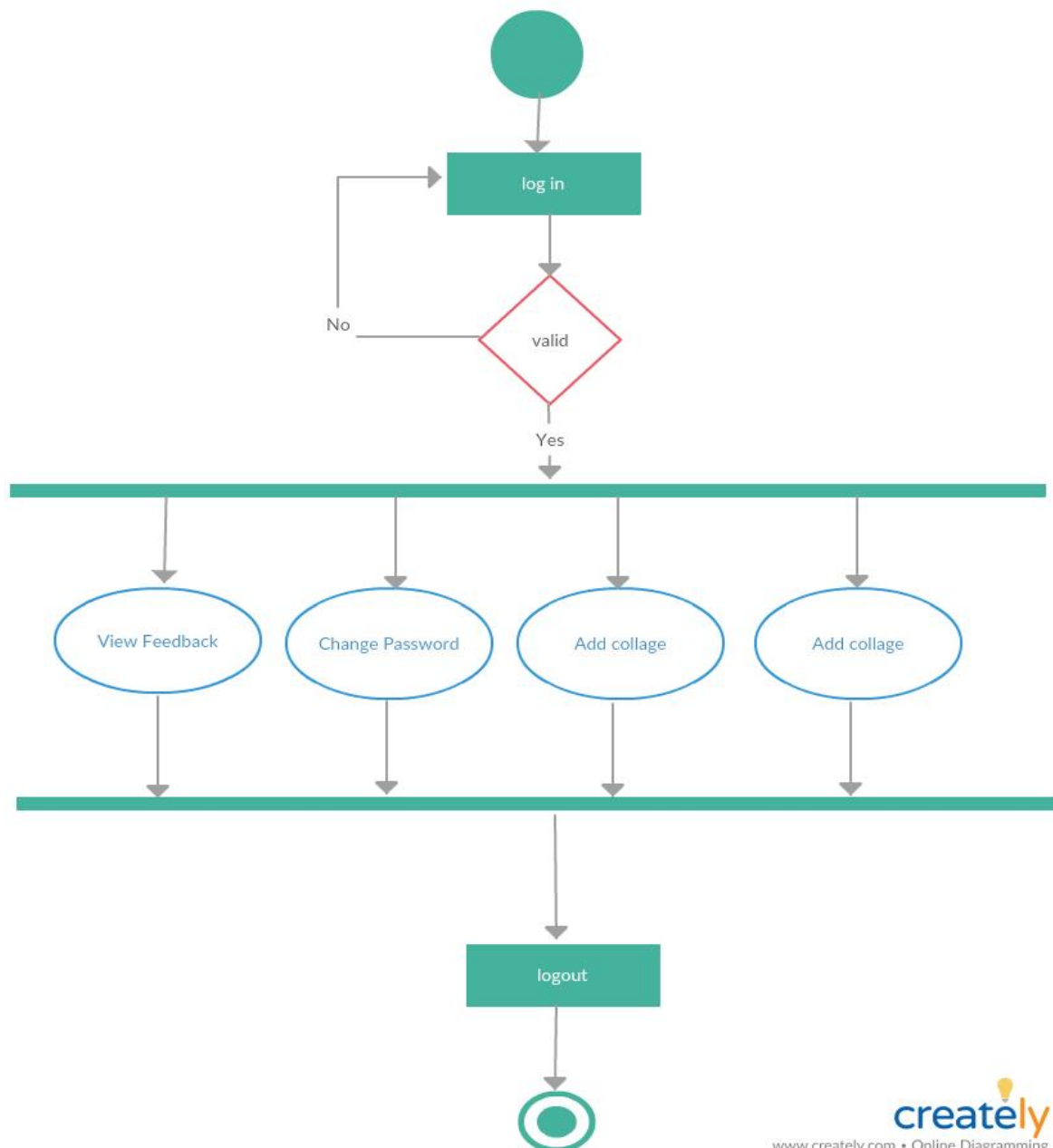


Figure (3-4) SEQUNS DIAGRAM

After registration of the student to enter and verify his information  
He can search for his own kidney or college information and will show his results  
Have a college assessment and send an assessment of the site

## ACTIVITY DIAGRAM



Figure(3-5) ACTIVITY DIAGRAM

- Login
- view Feedback
- Chang password
- Add college
- Add colleg Info
- Then logout

## CLASS DIAGRAM

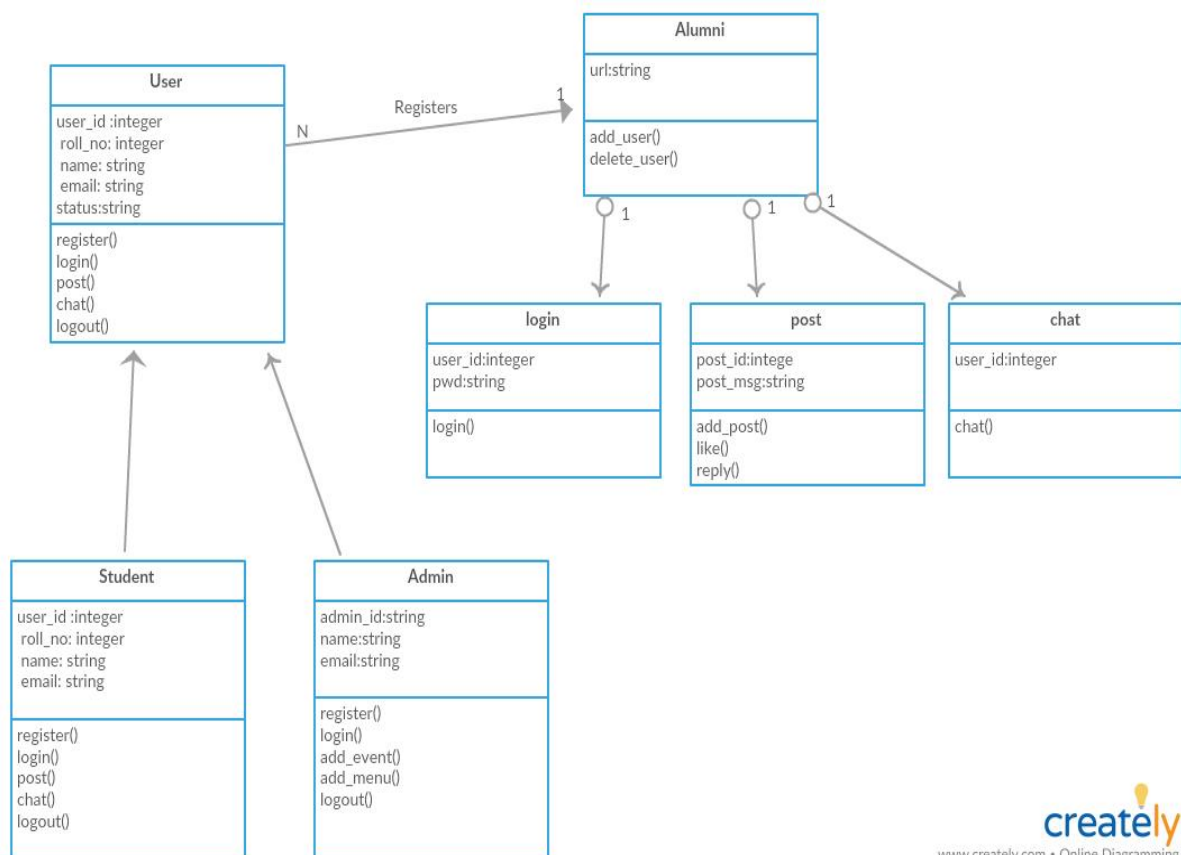
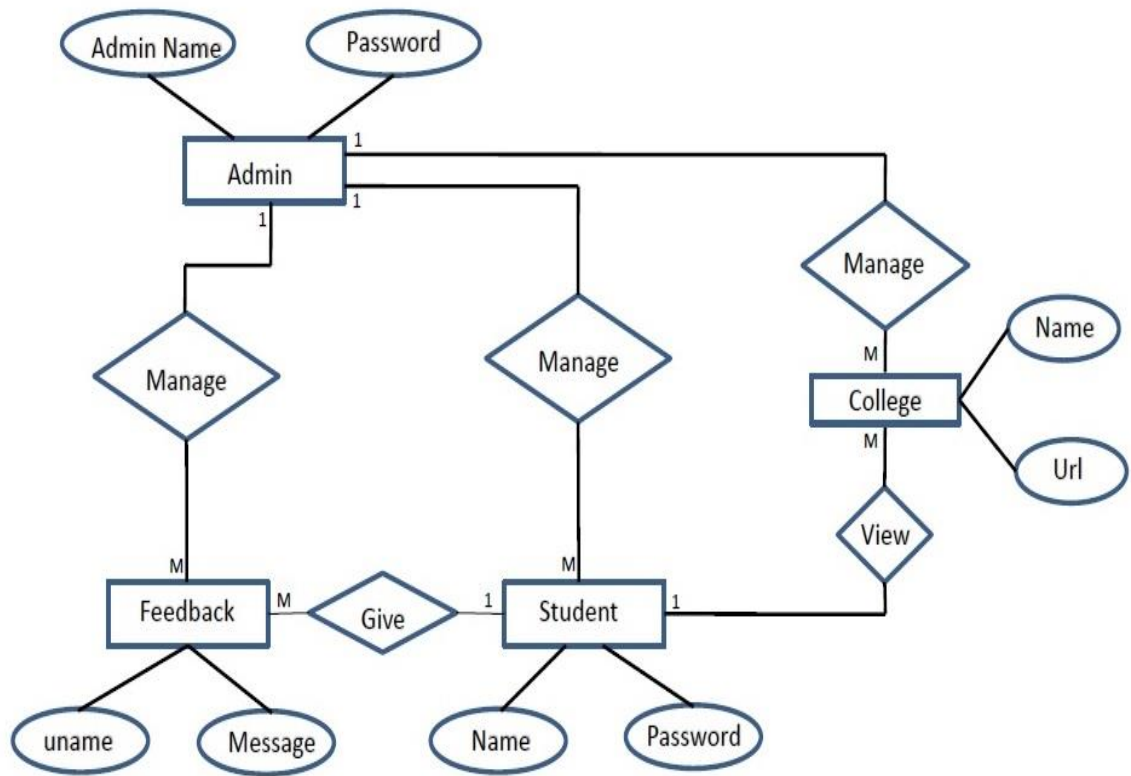


Figure (3-6)system class diagram

Table 3-1 Class diagram member functions

Title :	College Alumni
Description:	College Alumni provide the way to alumni that allows the alumni to connect with the college and the existing student of the college.This Will help the college to know about the current status of alumni students.
Primary Actor:	Student
Preconditions:	Student visit the Website
Post conditions:	Student registers their self.
Alumni:	<ol style="list-style-type: none"> <li>1. The Alumni will reduce the distance between the current and the passout students.</li> <li>2. After the registration of the students they will be able to login, chat and post from this website .</li> <li>3. The data of the different modules are stored into the database i.e. php-my admin and displayed on GUI by using the PHP code.</li> </ol>
Admin::	Admin are the type of user and after the registration will be able to manage the whole portal in terms of maintaining all the modules (dynamic And static) and can add or delete the records of the students also.
Student:	Students are also the another type of user who all are going to use the website after the registration and with that they can be able to login, post, chat.
Login:	Once the student registered their self then and then only they can login With the given username and the password
Chat:	Post: The student will be able to post any message after the login procedure

# ER DIAGRAM



Figure(3-7) ERD Diagram

# LOGIN PAGE

## Login

First name:

Last name:

☒ Admin

☐ Student

Figure (3-8) login

# SEARCH

☐ Student

☐ Colleg

☒ Colleg info

Figure(3-9) search

## **CHAPTER 4**

We expect after the adoption of the project and its application to the university in the graduates department will be of great benefit in:

- Demonstrate the level of learning outcomes of the university
- Assist in hiring a large number of graduates
- Use the technical sections dedicated to the project such as
- Use the technical sections dedicated to the project such as the Department of Graduate Management at the University

And It is expected that the level of the university will rise on the rest of the universities thanks to this project, which will show the actual output of students at the university

# **CHAPTER 5**

## **CONCLUSION**

This system will be available for general public use through the web interface. A non-registered visitor can look at the list of graduates according to year of graduation or a field of study. He can also look at graduates profiles. The level of profile details shown to the public is limited. By default, a public visitor can only see name and surname of a graduate, year of graduation and a field of study. The faculty endeavors to propagate its graduates.

Therefore graduates can also add some information about themselves into the system during the study such as working experience, knowledge. Graduates can enable to display this information in their profiles for public visitors. Inserted information can be used as an input for generating graduate's curriculum vitae in pdf format, which is provided automatically. It is in a graduate's competence, which information will be searched by pages with their crawlers. A graduate can use it for the building of his virtual web identity on the internet.

Our Alumni system solves the problem concerned with graduate's feedback to the faculty with an inquiry module. In this module the faculty can define questions with answers which active graduates can respond. This module should be used for collecting data which are not included in graduate's profiles and have high information value for the faculty.

# REFERENCES

<http://www.chegg.com/homework-help/questions-and-answers/project-name-alumni-management-system-project-project-details-hired-develop-software-track-q20206087>

[HTTPS://WWW2.DOM.EDU/SITES/DEFAULT/FILES/DOCUMENTS/ABOUT/OIR/ALUMNI\\_DATA\\_ENHANCEMENT\\_PROJECT\\_FINAL\\_REPORT\\_SEPT\\_12.PDF](HTTPS://WWW2.DOM.EDU/SITES/DEFAULT/FILES/DOCUMENTS/ABOUT/OIR/ALUMNI_DATA_ENHANCEMENT_PROJECT_FINAL_REPORT_SEPT_12.PDF)

<http://1000projects.org/download-an-alumni-association-java-project-report.html>

<http://projectsgeek.com/2015/11/alumni-management-system-java-project.html>