



Annual Program Report

— (Bachelor)

Program: Bachelor of Radiological Sciences and Medical Imaging

Program Code (as per Saudi Standard Classification of Educational Levels and Specializations): 091406

Qualification Level: L6

Department: Radiological Sciences and Medical Imaging

College: Applied Medical Sciences

Institution: Majmaah University

Academic Year: 1443 -1444 H

Main Location: Building Number 5 – Main Campus

Branches offering the Program (if any):

- NA

Table of Contents

A. Program Statistics	3
B. Program Assessment	3
1. Program Learning Outcomes Assessment and analysis according to PLOs assessment plan *	3
2. Evaluation of Courses	6
3. Students Evaluation of Program Quality	8
4. Scientific research and innovation during the reporting year	13
5. Community Partnership	13
6. Other Evaluation (if any)	14
C. Program Key Performance Indicators (KPIs)	16
D. Challenges and difficulties encountered by the program (if any)	19
E. Program development Plan	20
F. Approval of Annual Program Report	20



A. Program Statistics

Item	Number
Number of students enrolled in the program	32
Number of students who started the program (in reporting year)	75
Number of students who completed the program	18

B. Program Assessment

1. Program Learning Outcomes Assessment and analysis according to PLOs assessment plan *

#	Program Learning Outcomes	Assessment Methods (Direct and Indirect)	Targeted Performance (%)	Assessment Results
Knowledge and Understanding				
K1	To describe patient positioning and anatomical structures radiographically techniques via research aspect solutions in societal and global context.	Theory Exam, Assignment and Quiz	70%	86%
K2	To explain problems-and solutions associate with critical-thinking skills in the performance of medical imaging procedures	Theory Exam, Assignment and Quiz	70%	85%
K3	To choose suitable ionizing radiation.	Theory Exam, Assignment and Quiz	70%	73%
K4	To explain problems via critical thinking in medical imaging procedures and conclude the solutions	Theory Exam, Assignment and Quiz	70%	82%
Skills				
S1	To produce diagnostic images and able to create conclusions.	Assignment, Quiz, presentation	70%	84%
S2	To select exposure factors considering radiation protection laws for the patients, competent and workers. Recognizing emergency patient conditions and, if necessary, initiating lifesaving first aid.	Assignment, Quiz, presentation	70%	87%

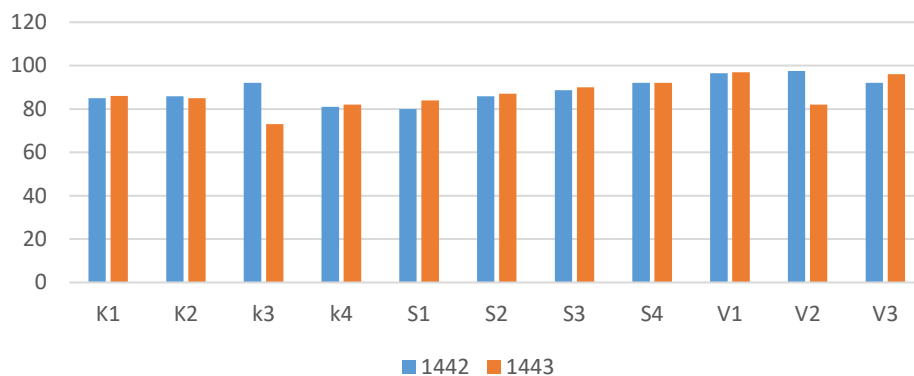


S3	To interpret an appropriate information and communications technology in gathering, and communicating medical images performance and reconstruction	Assignment, Quiz, presentation and Practical Exam	70%	90%
S4	To use standard tests and measurements, to evaluate data and to apply patient care radiological procedures effectively	Assignment, Quiz, presentation and Practical Exam	70%	92%
Values, autonomy, and responsibility⁸⁷				
V1	To demonstrate expected professional behavior within the profession's scope of practice and function effectively as a leader or member of the team	Assignment, Quiz, presentation and Practical Exam	70%	97%
V2	To demonstrate and enhance competence in written, oral, and graphical communication across diverse technical and non-technical settings.	Assignment, Quiz, presentation and Practical Exam	70%	82%
V3	To promote a positive learning environment for the education and clinical skills development in the field of radiology	Assignment, Quiz, presentation and Practical Exam	70%	96%

*Attach a separate report on the program learning outcomes assessment results for male and female sections and for each branch (if any).



Fig1: Comparative scale for PLO Achivement percentage 1442Vs1443



Strengths:

- The overall achievements of all PLOs exceeded the target level of program PLOs achievement.
- Students demonstrated significant knowledge related to the texts, terminologies, theories, and practices
- S1 and V3 improved in 43 compared with academic year 42.

Aspects that need improvement with priorities:

- The PLOs related to knowledge (K3) domain has an achievement level less than 1442 . While both 42,43 the achieved target(70%).
- PLO V2 also decreased when compared with 42 academic year .
- Implementing the assessment plan for the Course Learning Outcomes CLOs and for the Program Learning Outcomes PLOs.
- Improvising the teaching strategies and inculcating the habit of using learning strategies among the students to increase their potential.
- Imperative initiation of specific radiological sciences labs (Conventional X-ray ,Portable machine ,CT,MRI .

2. Students Evaluation of Courses

Course Code	Course Title	Number of Students Who Evaluated the Course		Percentage of Participants		Evaluation Results		Developmental Recommendations
		M	F	M	F	M	F	
SEMESTER ONE								
RMI232	Principles of Anatomy	5	27	100%	100%	70	75	Developmental recommendations for each course are mentioned in the course report in details (1 st Semester CR)
RMI233	Introduction to Medical Imaging	5	27	100%	100%	89	90	
RMI234	Radiation Biology and Protection	5	27	100%	100%	80	84	
RMI235	Radiation Physics and Equipment	5	27	100%	100%	80	83	
RMI237	Principles of Physiology	5	27	100%	100%	73.4	76	
RMI351	Nuclear Medicine Physics and Instrumentations	13	17	100%	100%	72	77	
RMI352	Cross-Sectional Anatomy	13	17	100%	100%	83.4	85	
RMI353	CT Physics and Instrumentation	13	17	100%	100%	82.6	86	
RMI354	Radiographic Techniques 2	13	17	100%	100%	82	83	
RMI355	Clinical Practicum 1	13	17	100%	100%	100	100	
RMI471	Trauma and Emergency Radiography	11	NA	100%	100%	90	NA	
RMI472	Computed Tomography Techniques	11	NA	100%	100%	86.6	NA	
RMI473	Image Processing Techniques	11	NA	100%	100%	92	NA	
RMI474	Radiation Therapy Physics and Instrumentation	11	NA	100%	100%	80	NA	
RMI475	Nuclear Medicine Techniques	11	NA	100%	100%	84	NA	
RMI476	Clinical Practicum 3	11	NA	100%	100%	88	NA	
RMI441	Treatment Planning and Dosimetry	11	NA	100%	100%	74	NA	
RMI421	MRI Procedures 1	11	NA	100%	100%	90	NA	
RMI591	Quality Assurance in Radiology	18	NA	100%	100%	70	NA	
RMI592	Graduation Project	18	NA	100%	100%	98	NA	
RMI523	Sectional Imaging Clinical MRI Practice1	18	NA	100%	100%	86.6	NA	
RMI524	Sectional Imaging Clinical MRI Practice2	18	NA	100%	100%	77.8	NA	
RMI525	Pathology in MRI	18	NA	100%	100%	73.4	NA	
RMI526	Advance Magnetic Resonance Imaging	18	NA	100%	100%	68.8	NA	
RMI543	Radiation Therapy Clinical Practice 1	18	NA	100%	100%	88.8	NA	
RMI544	Radiation Therapy Clinical Practice 2	18	NA	100%	100%	80	NA	
RMI545	Clinical Radiation Oncology Practice	18	NA	100%	100%	80	NA	
RMI546	Advance Clinical Radiation Therapy	18	NA	100%	100%	75	NA	



Course Code	Course Title	Number of Students Who Evaluated the Course		Percentage of Participants		Evaluation Results		Developmental Recommendations
		M	F	M	F	M	F	
SEMESTER TWO								
RMI232	Principles of Anatomy	10	10	100%	100%	72.8		Developmental recommendations for each course are mentioned in the course report in details (2 nd Semester CR)
RMI233	Introduction to Medical Imaging	10	10	100%	100%	82		
RMI234	Radiation Biology and Protection	10	10	100%	100%	78.2		
RMI235	Radiation Physics and Equipment	10	10	100%	100%	74.6		
RMI237	Principles of Physiology	10	10	100%	100%	72.2		
RMI 241	General Pathology	5	27	100%	100%	72		
RMI 242	Patient Care and Ethics in Radiology	5	27	100%	100%	77		
RMI 243	Radiographic Anatomy	5	27	100%	100%	8		
RMI 244	Radiographic Technique 1	5	27	100%	100%	73		
RMI 245	Computer Applications in Radiology	5	27	100%	100%	82.6		
RMI 246	Digital Imaging Systems	5	27	100%	100%	72		
RMI 247	Numerical Mathematics	5	27	100%	100%	74.6		
RMI 361	Ultrasound Physics& Instrumentation	13	17	100%	100%	88.8		
RMI 362	Radiographic photography	13	17	100%	100%	89		
RMI 363	MRI Physics and Instrumentation	13	17	100%	100%	80		
RMI 364	Image Analysis	13	17	100%	100%	80		
RMI 365	Radiographic Pathology	13	17	100%	100%	84		
RMI 366	Clinical Practicum 2	13	17	100%	100%	75		
RMI 481	Ultrasound Techniques	11	NA	100%	100%	80		
RMI 482	Radiation Therapy Techniques	11	NA	100%	100%	78.3		
RMI 483	Research Methodology	11	NA	100%	100%	80		
RMI 484	MRI Techniques	11	NA	100%	100%	82		
RMI 485	Clinical Practicum 4	11	NA	100%	100%	81		
RMI 486	Introduction To Radiation Oncology	11	NA	100%	100%	79		
RMI 422	MRI Procedures 2	11	NA	100%	100%	86		
RMI 442	Radiation Safety and Dosimetry	11	NA	100%	100%	68		

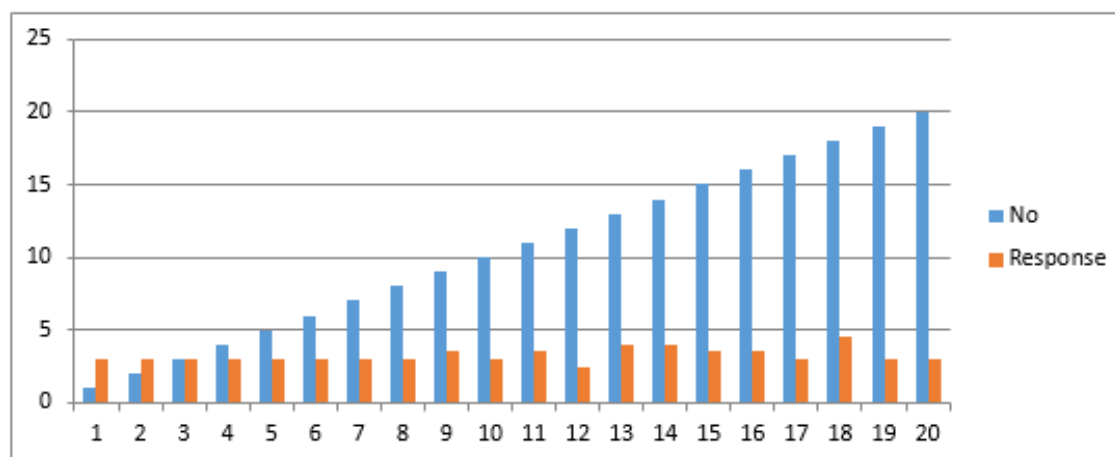


3. Students Evaluation of Program Quality

Evaluation Date:	Number of Participants: 44 F, 47 M
Students Feedback	Program Response
<p>Strengths:</p> <ul style="list-style-type: none"> • The program provided me with suitable and available library Students were happy with the instructor's availability for consultation and advice when they needed to speak with them. • The students were satisfied with the instructors in the program as they had thorough and comprehensive knowledge of the content of the courses they taught. • The program has helped me to develop sufficient interest to want to continue to keep up to date with new developments in the student field of study .and also The program has improved the student's skills in communication as they stated above. 	<p>The program will consider the evaluation result in the next year, it will analyze the reasons that led to obtaining an average evaluation and find appropriate treatments to raise the evaluation level.</p>
<p>Areas of Improvement:</p> <ul style="list-style-type: none"> • Very low responses concerning this survey • Some students mentioned some difficulties during the working year in the hospitals with the training and Field experience programs Some students were stated weakness of Library resources AS the were not sufficiently adequate and available when they needed them. 	<p>The program will consider the evaluation result in the next year, it will analyze the reasons that led to obtaining an average evaluation and find appropriate treatments to raise the evaluation level.</p>
<p>Suggestions for improvement:</p> <ul style="list-style-type: none"> • Encourage the students to fill the survey • Improve the library facilities for the students and make the sources wider than they are now. • Still to arrange with the stockholders in hospitals to take care of the graduates and make them work and use the different radiological equipment's and facilities and trust on them. 	<p>The program will consider the evaluation result in the next year, it will analyze the reasons that led to obtaining an average evaluation and find appropriate treatments to raise the evaluation level.</p>



Fig.3 showed Program Evaluation Survey (PES) response



Student Experience Survey (SES)

No	Statements	Response	
		M	F
1	It was easy to find information about the institution and its programs before I enrolled at this institution for the first time	3	4.3
2	When I first started at this institution the orientation program for new students was helpful for me	3.25	4.3
3	There is sufficient opportunity at this institution to obtain advice on my studies and my future career	3.75	3.3
4	Procedures for enrolling in courses are simple and efficient	3.1	3.6
5	Classrooms (including lecture rooms, laboratories etc.) are attractive and comfortable	3.6	3.3
6	Student computing facilities are sufficient for my needs	3.5	4
7	The library staff are helpful to me when I need assistance	3.3	3.6
8	I am satisfied with the quality and extent of materials (references, journals, databases... etc.) available for me in the library	3.3	4
9	The library is open at convenient times	3	4
10	Adequate facilities are available for extracurricular activities (including sporting and recreational activities), restaurants and transportation	3	2.6
11	Adequate facilities are available at this institution for religious observances	3.25	3.6
12	Most of the faculty with whom I work at this institution are genuinely interested in my progress	3.8	3.6
13	Faculty at this institution are fair in their treatment of students	3.6	4
14	My courses and assignments encourage me to investigate new ideas and express my own opinions	3.23	3.6
15	As a result of my studies, my ability to investigate and solve new and unusual problems is increasing	3.8	4





16	My ability to effectively communicate the results of investigations I undertake is improving as a result of my studies	3.5	4
17	My program of studies is stimulating my interest in further learning /	3.6	4
18	The knowledge and skills I am learning will be valuable for my future career /	3.75	3.6
19	I am learning to work effectively in group activities	3.5	4
20	Overall I am satisfied with my life as a student at this institution	3.3	3.6
Average		3.4	3.7

Strengths:

- The students are satisfied with the advice giving to them by the teaching staff and there is sufficient opportunity at this institution to obtain advice on my studies and my future career .
- The student also satisfied with his ability to effectively communicate the results of investigations he undertakes is improving as a result of his studies
- The student Also agree with the knowledge and skills he is learning ,will be valuable for his future career .

Areas for Improvement:

- Also seems that some difficulties in simplicity and efficiencies of Procedures for enrolling in courses are facing the students. (i,e the registration procedures).
- The student was not so happy with the Adequate facilities availability for extracurricular activities (including sporting and recreational activities), restaurants and transportation.

Suggestions for improvement:

- Initiation of adequate facilities for extracurricular activities (including sporting and recreational activities), and transportation. This should be done as quick as possible.
- Encourage and urge the IT department to make the registration processes and other procedures of enrolling in courses easier and simpler for the students.

Program Evaluation Survey (PES)

A summarized survey to give a view of the last year students ie (final students) was raised

Concerning their experiences at the institution during the period of handling this program of Radiological Sciences and Medical Imaging (RMI).

No	Statements	Response
1	Adequate academic and career counselling was available for me throughout the program	3
2	The instructors were available for consultation and advice when I needed to speak with them	3
3	The instructors in the program inspired me to do my best	3
4	The instructors in the program gave me helpful feedback on my work	3





5	The instructors in the program had thorough knowledge of the content of the courses they taught	3
6	The instructors were enthusiastic about the program	3
7	The instructors cared about the progress of their students	3
8	Study materials in courses were up to date and useful	3
9	Library resources were adequate and available when I needed them	3.5
10	Classroom facilities (for lectures, laboratories, tutorials etc) were of good quality	3
11	Student computing facilities were sufficient for my needs	3.5
12	Adequate facilities were available for extracurricular activities (including sporting and recreational activities)	2.5
13	Adequate facilities were available for religious observances	4
14	Field experience programs (internship, practicum, cooperative training) were effective in developing my skills. (Omit this item if not applicable to your program)	4
15	What I have learned in this program will be valuable for my future	3.5
16	The program has helped me to develop sufficient interest to want to continue to keep up to date with new developments in my field of study	3.5
17	The program has developed my ability to investigate and solve new problems	3
18	The program has improved my ability to work effectively in groups	4.5
19	The program has improved my skills in communication	3
20	The program has helped me to develop good basic skills in using technology to investigate issues and communicate results	3
21	I have developed the knowledge and skills required for my chosen career	2.5
22	Overall I was satisfied with the quality of my learning experiences at this institution	2.5
Average		3.1

Strengths:

- Students were happy with the instructors availability for consultation and advice when they needed to speak with them.
- The students were satisfied with the instructors in the program as they had thorough and comprehensive knowledge of the content of the courses they taught.
- The program has helped me to develop sufficient interest to want to continue to keep up to date with new developments in the student field of study .and also The program has improved the student's skills in communication as they stated above

Areas for Improvement:

- Some students mentioned some difficulties during the working year in the hospitals with the training and Field experience programs Some students were stated weakness of Library resources AS the were not sufficiently adequate and available when they needed them.

Suggestions for improvement:





- Improve the library facilities for the students and make the sources wider than they are now.
- Talk to the responsible managers in the hospitals to take care of the graduates and make them work and use the different radiological equipment's and facilities and trust on them.

Faculty Satisfaction Survey (FSS)

No	Indicate your level of satisfaction with each of the following	Response	
		M	F
1	Contribution of my work to the institutional mission	5	5
2	Communication across the entire campus	5	1
3	Sense of personal safety in the work environment	5	5
4	Effectiveness of Human Resources services	5	5
5	Cleanliness/maintenance of my work environment	4	5
6	Technology support	5	5
7	Clerical/administrative assistance	5	5
8	Commitment of institutional leaders to ongoing improvement	5	5
9	Salary/wages for the work I do	5	5
10	Ability to report complaints without fear of retaliation	5	5
11	Availability of Library resources	5	5
12	Office/work space	5	5
13	Availability of office equipment and supplies	5	5
14	Institutional leaders' awareness of staff needs	5	5
15	Workload for my position	5	5
16	Opportunities for professional development/ continuing education	5	5
17	Communication within my department	5	5
18	My understanding of my job responsibilities	5	5
19	My awareness of performance expectations for my position	5	5
20	Clarity of the performance evaluation process	5	5
21	Usefulness of feedback on annual performance evaluation	5	5
22	Feeling that work is valued and appreciated	5	5
23	Receiving recognition for team accomplishments	5	5
24	Being recognized by peers and coworkers	5	5
25	Receiving formal recognition for contributions	5	5
26	Receiving recognition for individual accomplishments	5	5
27	Being recognized by managers/supervisors	5	5
28	What is your overall level of satisfaction with your position at College of applied medical sciences?	5	5
Average		4.9	4.8

This Faculty Satisfaction Survey (FSS) is giving the chance to the faculty to tell his opinion on all over the position and situation in the department as well as the college (CAMS).

Faculty satisfaction survey is a very useful for the development of teaching and educational process .

Strengths:

- The faculty is highly satisfied with his Contribution of his work to the institutional mission and the Communication across the entire campus.



- Faculty also appreciates of Being recognized by his managers/supervisors and his ability to report complaints without fear of retaliation.
- Also, happy with Sense of personal safety in the work environment as well as the effectiveness of Human Resources services.

Areas for Improvement:

- Some point just needs to have an eye on them like the Communication across the entire campus in female section.
- Also, the technical support needs some modifications .

Suggestions for improvement:

- Put more care on the technical support modification.
- Also, some awareness of the staff demands needs to be considered .i-e well equipped labs. and radiologic machines MRI,X-ray ,CT ,PET,SPECT

4. Scientific research and innovation during the reporting year

Activities Implemented	Number
Published scientific research	The average in Male and Female = 5
Current research projects	3
conferences organized by the program	0
Seminars held by the program	0
Conferences attendees	0
Seminars attendees	0

Discussion and analysis of scientific research and innovation activities:

Over all percentage of full-time faculty members who provided professional development activities inside or outside the university during the year to the total teaching staff in the program was 100%.

5. Community Partnership

Activities Implemented	Brief Description*
Saudi National Day 24-9-2021	Volunteer work initiative on National Day 91. The aim of this event was to celebrate the national day through serving the visitors and educating community members about the importance of conducting medical examinations and preventing infectious diseases, introducing the important symptoms of blood pressure, diabetes and anemia, and identifying how to prevent lower back and neck pain and the causes leading to these health problems and other awareness and service activities.





International Day of Radiology 8-11-2021	International Day of Radiology
Awareness with Breast Cancer	One of the awareness related events that was held in female campus, college of Education, Majmaah University in 9th November, 2021

*including timing of implementation, number of participants, and outcomes.

Comment on community partnership activities**

These activities increased the community awareness regarding health and diseases, strengthened the relations between the College and the Community

**including overall evaluation of the program's performance in these activities (if any).

6. Other Evaluation (if any)

(e.g., independent reviewer, program advisory committee, and stakeholders (e.g., faculty members, alumni, and employers)

Evaluation method: FFS	Date:	Number of Participants: M =5, F 3
Summary of Evaluator Review		Program Response
<p>Strengths:</p> <ul style="list-style-type: none"> An ability to demonstrate and formulate written, oral, and graphical communication in both technical and non-technical environments. An ability to demonstrate expected professional behavior within the profession's scope of practice and function effectively as a leader or member of the team. <p>All the above mentioned are strength point gained during the course handling.</p> <ul style="list-style-type: none"> An ability to explain problems-and tell solutions associate with critical-thinking skills in the performance of medical imaging procedures . 		Strengths will be enhanced and good performance will be maintained
<p>Points for Improvements:</p> <ul style="list-style-type: none"> The practical out put could be improved by having a real time modern X-ray and other radiological instruments for more development of practical skills and achieving the target percentage of practical domains Also, the technical support needs some modifications 		The department is studying the various method and suitable solutions that will lead to the solve all weakness points





Suggestions for development:

- Initiating a well-equipped radiological labs. and expensive X-ray and related instruments such alike CT,PET, SPECT, and other modalities.

The department raise the request to head of the department to prepare well equipped lab

*Attach independent reviewer's report and stakeholders' survey reports (if any).





C. Program Key Performance Indicators (KPIs)

Including the key performance indicators required by the NCAAA.

No	KPI	Targeted Value	Actual Value	Internal Benchmark	Analysis	New Target
1	KPI-P-01 Percentage of performance indicators of the operational plan objectives of the program that achieved the targeted annual level to the total number of indicators targeted for these objectives in the same year.	%80	85%	80%	This KPI implemented for Male and female sections, the target achieved	87%
2	MUP-P1 Rating of beneficiaries' satisfaction with the community services	4	4	3.75	This KPI implemented for Male and female sections, the target achieved	4.5
3	KPI-P02 Evaluate the quality of learning experience in the program by final year students	4	4	3.6	This KPI implemented for Male and female sections, the target achieved	4.2
4	KPI-P03 Evaluation of the course's quality by students	4.3	4.4	4.2	This KPI implemented for Male and female sections, the target achieved	4.5
5	KPI-P04 Proportion of undergraduate students who completed the program in minimum time	100%	100%	100%	This KPI implemented for Male and female sections, the target achieved	100%
6	KPI-P05 First-year students retention rate	100%	100%	100%	The target of employee KPI was achieved in Employed graduates	100%
7	KPI-P06 Students performance in the	100%	52%	100%	This KPI implemented for	55%





	professional and/or national examinations				Male and female sections	
8	KPI-P07 Rate of employment and postgraduate studies among graduates	EM=75% EN=20%	EM=75% EN=0%	EM=70% EN=0%	This KPI is giving an Employers evaluation of the program graduate proficiency for the male section as no graduated in the female one.	EM=80% EN=20%
9	KPI-P08 Number of students per class	L:10 La:10 C:10	L:15 La:11 C:10	L:14 La:10 C:10	This KPI implemented for Male and female sections	L:10 La:10 C:10
10	KPI-P09 Employers' evaluation of the proficiency of program graduates	4	4.6	3.75	This KPI implemented for Male and female sections	4.7
11	KPI-P010 Students' satisfaction rate with services	4.2	4.4	4	This KPI implemented for Male and female sections	4.5
12	MUP-P2 Percentage of warnings among students	0%	0%	0%	This KPI implemented for Male and female sections	0%
13	MUP-P3 Denied entry of students from final exams	0%	0%	0%	This KPI implemented for Male and female sections	0%
14	MUP-P4 The number of student papers that have been published or presented in scientific conferences during the past year	2	0	0	This KPI implemented for Male and female sections	2
15	KPI-P11 Number of students to teaching staff in the program	10:1	14:1	10:1	This KPI implemented for Male and female sections	10:1
16	KPI-P012 Percentage of teaching staff distribution based on:	G:100% R: 50%	G:50% R: 38%	G:50% R: 38%	This KPI implemented for Male and female	G:40% R: 40%





	a. Gender b. Branches (No Branch) c. Academic				sections, the target achieved	
17	KPI-P13 The annual teaching staff leaving	0%	0%	0%	This KPI implemented for Male and female sections	0%
18	KPI-P14 Percentage of full-time faculty members who published a research	85%	87.5%	83%	This KPI implemented for Male and female sections	88%
19	KPI-P15 The average number of refereed and/or published research per each faculty member	4	4	3	This KPI implemented for Male and female sections	5
20	KPI-P16 The average number of citations in refereed journals from published research per faculty member	20	21	19	This KPI implemented for Male and female sections	21
21	MU-P5 The percentage of full-time faculty members who provided professional development activities	85%	88%	83%	This KPI implemented for Male and female sections	90%
22	KPI-P17 Beneficiaries' satisfaction rate with the adequacy and diversity of learning resource	4	4.3	3.7	This KPI implemented for Male and female sections	4.5

C: Clinical

EM = Employed

EN= Enrolled in postgraduate

L: lecture

La: laboratory





NA= Data Not available

G: Gender

R:Rank

Comments on the Program KPIs and Benchmarks results:

Program strengths:

- ❖ Faculty member's help students obtain the information and encouragement they need and express their concern with students' progress.
- ❖ Forming an advisory committee to give advice about the quality of the program and how it can be developed.
- ❖ Faculty members and teaching staff dedication to work.
- ❖ Faculty members at RMI department participated in almost workshops performed by the Training Unit in the college

Points that need to be improved in the program:

- ❖ No external benchmark has been provided for the all program's KPIs
- ❖ Insufficient office hours were registered by some students of RMI

Priorities for improvement (start-ups with the program improvement plan.

- ❖ The program will organize series of workshop related to SCFHS examination
- ❖ Specific radiological related machines and equipment should be provided in the RMI labs.
- ❖ An external benchmark should be provided for next year for all KPIs
- ❖ Students should be made aware of the job opportunities made available on the basis of what they have studied and learned
- ❖ Using different advertising tools to announce the students by all academic activities during the year
- ❖ Follow up the KPIs that always measured at the level of University regularly.

D. Challenges and difficulties encountered by the program (if any)

Teaching	NA
Assessment	NA
Guidance and counseling	NA
Learning Resources	NA
faculty	NA
Research Activities	NA
Others	NA



E. Program development Plan

No.	Priorities for Improvement	Actions	Action Responsibility
1	Increase the passing rate among graduate in SCFHS exam.	The program will organize series of workshop related to SCFHS examination	Interns and health professional Committee
2	Reduce the number of students per class or lab	Increasing the number of sections in courses to reduce the number of students per class or lab	Head of RMI department
3	Reduce the student per teaching staff ratio	Increasing the number of faculty members in the department	Head of department
4	Specific radiological related machines and equipment should be provided in the RMI labs.	Raise the request from quality committee to head of the department	RMI Curriculum committee with course instructors and coordinators
5	Increase the passing rate among graduate in SCFHS exam.	The program will organize series of workshop related to SCFHS examination	Interns and health professional Committee

- Attach any unachieved improvement plans from previous report.
- The annual program report needs to be discussed in department council

F. Approval of Annual Program Report

COUNCIL / COMMITTEE	RMI DEPARTMENT COUNCIL
REFERENCE NO.	4
DATE:	23-02-1443 H

